

For Research Use Only

EPHB4 Polyclonal antibody

Catalog Number: 20883-1-AP

Featured Product

25 Publications



Basic Information

Catalog Number:

20883-1-AP

Size:

150ul, Concentration: 500 ug/ml by Nanodrop;

Source:

Rabbit

Isotype:

IgG

Immunogen Catalog Number:

AG10033

GenBank Accession Number:

BC052804

GeneID (NCBI):

2050

UNIPROT ID:

P54760

Full Name:

EPH receptor B4

Calculated MW:

987 aa, 108 kDa

Observed MW:

110-120 kDa

Purification Method:

Antigen affinity purification

Recommended Dilutions:

WB: 1:1000-1:6000

IHC: 1:50-1:500

IF/ICC: 1:200-1:800

Applications

Tested Applications:

WB, IHC, IF/ICC, ELISA

Cited Applications:

WB, IHC, IF

Species Specificity:

human, mouse, rat

Cited Species:

human, mouse, rat

Note-IHC: suggested antigen retrieval with TE buffer pH 9.0; (*) Alternatively, antigen retrieval may be performed with citrate buffer pH 6.0

Positive Controls:

WB : HT-29 cells, rat testis tissue, HeLa cells, HT-1080 cells, PC-3 cells, DU 145 cells

IHC : human lung cancer tissue, human pancreas tissue, human placenta tissue

IF/ICC : HT-29 cells,

Notable Publications

Author	Pubmed ID	Journal	Application
Hiroki Saito	31654153	Odontology	IHC
Limei Wang	27726217	Cell Prolif	WB
Hualong Bai	34611267	Commun Biol	IHC

Storage

Storage:

Store at -20°C. Stable for one year after shipment.

Storage Buffer:

PBS with 0.02% sodium azide and 50% glycerol, pH7.3

Aliquoting is unnecessary for -20°C storage

*** 20ul sizes contain 0.1% BSA

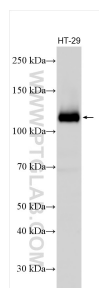
For technical support and original validation data for this product please contact:

T: 1 (888) 4PTGLAB (1-888-478-4522) (toll free in USA), or 1(312) 455-8498 (outside USA)

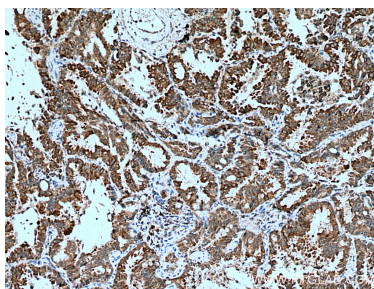
E: proteintech@ptglab.com
W: ptglab.com

This product is exclusively available under Proteintech Group brand and is not available to purchase from any other manufacturer.

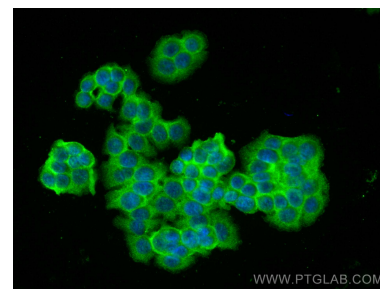
Selected Validation Data



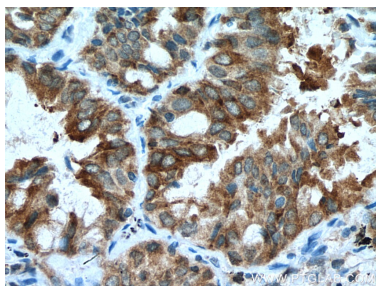
HT-29 cells were subjected to SDS PAGE followed by western blot with 20883-1-AP (EPHB4 antibody) at dilution of 1:3000 incubated at room temperature for 1.5 hours.



Immunohistochemical analysis of paraffin-embedded human lung cancer tissue slide using 20883-1-AP (EPHB4 antibody) at dilution of 1:200 (under 10x lens). Heat mediated antigen retrieval with Tris-EDTA buffer (pH 9.0).



Immunofluorescent analysis of (-20°C Ethanol) fixed HT-29 cells using EPHB4 antibody (20883-1-AP) at dilution of 1:400 and CoraLite®488-Conjugated Goat Anti-Rabbit IgG(H+L).



Immunohistochemical analysis of paraffin-embedded human lung cancer tissue slide using 20883-1-AP (EPHB4 antibody) at dilution of 1:200 (under 40x lens). Heat mediated antigen retrieval with Tris-EDTA buffer (pH 9.0).