

For Research Use Only

SEC23IP Polyclonal antibody

Catalog Number: 20892-1-AP

3 Publications



Basic Information

Catalog Number:

20892-1-AP

Size:

150ul, Concentration: 500 ug/ml by Nanodrop;

Source:

Rabbit

Isotype:

IgG

Immunogen Catalog Number:

AG14916

GenBank Accession Number:

BC063800

GeneID (NCBI):

11196

UNIPROT ID:

Q9Y6Y8

Full Name:

SEC23 interacting protein

Calculated MW:

1000 aa, 111 kDa

Observed MW:

125 kDa

Purification Method:

Antigen affinity purification

Recommended Dilutions:

WB: 1:1000-1:4000

IP: 0.5-4.0 ug for 1.0-3.0 mg of total protein lysate

IHC: 1:20-1:200

IF/ICC: 1:50-1:500

Applications

Tested Applications:

WB, IHC, IF/ICC, IP, ELISA

Cited Applications:

WB, IF

Species Specificity:

human, mouse, rat

Cited Species:

human

Note-IHC: suggested antigen retrieval with TE buffer pH 9.0; (*) Alternatively, antigen retrieval may be performed with citrate buffer pH 6.0

Positive Controls:

WB: HEK-293 cells, mouse kidney tissue, HeLa cells, U-251 cells

IP: HeLa cells,

IHC: human heart tissue, human liver tissue

IF/ICC: HeLa cells,

Background Information

SEC23-interacting protein (SEC23IP), also known as p125, is a member of the phosphatidic acid preferring-phospholipase A1 family. SEC23IP interacts with Sec23, a coat component of COPII vesicles which are involved in protein export from the endoplasmic reticulum (ER). SEC23IP localizes to ER exit sites and participates in the organization of this compartment (PMID: 15623529). It may have a role in the early stage of the secretory pathway (PMID: 10400679).

Notable Publications

Author	Pubmed ID	Journal	Application
Hongwei Chu	34932315	Anal Chem	WB
Yuanjiao Du	39352497	J Cell Biol	WB,IF
Miharu Maeda	39101946	J Cell Biol	IF

Storage

Storage:

Store at -20°C. Stable for one year after shipment.

Storage Buffer:

PBS with 0.02% sodium azide and 50% glycerol, pH7.3

Aliquoting is unnecessary for -20°C storage

*** 20ul sizes contain 0.1% BSA

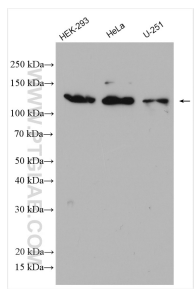
For technical support and original validation data for this product please contact:

T: 1 (888) 4PTGLAB (1-888-478-4522) (toll free in USA), or 1(312) 455-8498 (outside USA)

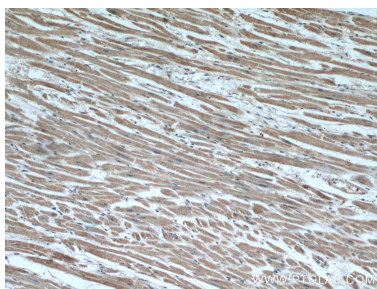
E: proteintech@ptglab.com
W: ptglab.com

This product is exclusively available under Proteintech Group brand and is not available to purchase from any other manufacturer.

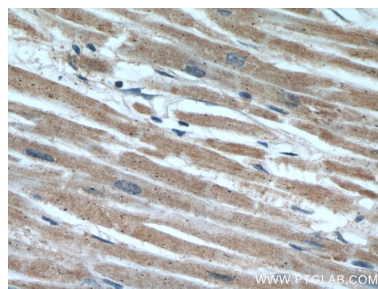
Selected Validation Data



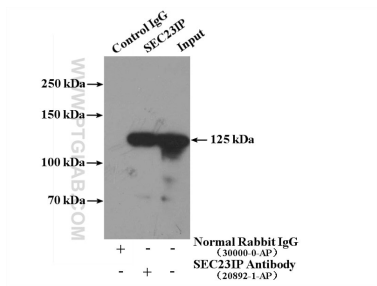
Various lysates were subjected to SDS PAGE followed by western blot with 20892-1-AP (SEC23IP antibody) at dilution of 1:2000 incubated at room temperature for 1.5 hours.



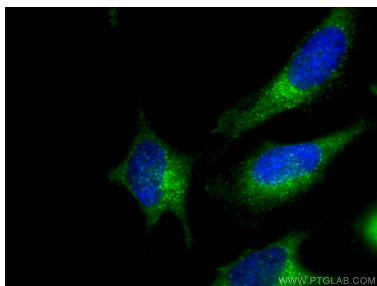
Immunohistochemical analysis of paraffin-embedded human heart using 20892-1-AP (SEC23IP antibody) at dilution of 1:50 (under 10x lens).



Immunohistochemical analysis of paraffin-embedded human heart using 20892-1-AP (SEC23IP antibody) at dilution of 1:50 (under 40x lens).



IP result of anti-SEC23IP (IP:20892-1-AP, 4ug; Detection:20892-1-AP 1:1000) with HeLa cells lysate 3600ug.



Immunofluorescent analysis of (-20°C Ethanol) fixed HeLa cells using SEC23IP antibody (20892-1-AP) at dilution of 1:0 and CoraLite®488-Conjugated Goat Anti-Rabbit IgG(H+L).