

For Research Use Only

E-selectin /CD62E Polyclonal antibody



Catalog Number: 20894-1-AP

18 Publications

Basic Information

Catalog Number: 20894-1-AP	GenBank Accession Number: BC142711	Purification Method: Antigen affinity purification
Size: 150ul , Concentration: 350 µg/ml by Nanodrop and 147 µg/ml by Bradford method using BSA as the standard;	GeneID (NCBI): 6401	Recommended Dilutions: WB 1:500-1:1000 IHC 1:800-1:3200
Source: Rabbit	Full Name: selectin E	
Isotype: IgG	Calculated MW: 610 aa, 67 kDa	
Immunogen Catalog Number: AG14944	Observed MW: 67 kDa	

Applications

Tested Applications: FC, IHC, WB, ELISA	Positive Controls: WB : Jurkat cells, L02 cells, HUVEC cells IHC : human tonsillitis tissue,
Cited Applications: IF, WB	
Species Specificity: human, mouse, rat	
Cited Species: human, mouse, rat	
Note-IHC: suggested antigen retrieval with TE buffer pH 9.0; (*) Alternatively, antigen retrieval may be performed with citrate buffer pH 6.0	

Background Information

E-selectin, also known as ELAM-1 or CD62E, is a member of the selectin family of adhesion molecules that also includes L-selectin and P-selectin. E-selectin is an inducible endothelial cell surface molecule. Its expression on endothelial cells is transcriptionally upregulated by various proinflammatory substances such as IL-1, TNF α and lipopolysaccharide (LPS). Besides, it can be secreted by endothelial cells, and can be detected in a soluble form (sE-selectin) in serum. During inflammation, E-selectin plays an important part in recruiting leukocytes to the site of injury. (PMID: 2827173; 1382417; 8943958)

Notable Publications

Author	Pubmed ID	Journal	Application
Xiaohui Zhou	32935825	Clinics (Sao Paulo)	WB
Jie Qi	31650167	Acta Biochim Biophys Sin (Shanghai)	WB
Hui Cui	33055159	Sci Adv	WB

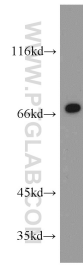
Storage

Storage:
Store at -20°C. Stable for one year after shipment.
Storage Buffer:
PBS with 0.02% sodium azide and 50% glycerol pH 7.3.
Aliquoting is unnecessary for -20°C storage

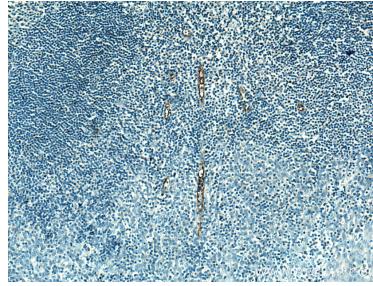
For technical support and original validation data for this product please contact:
T: 1 (888) 4PTGLAB (1-888-478-4522) (toll free in USA), or 1(312) 455-8498 (outside USA)
E: proteintech@ptglab.com
W: ptglab.com

This product is exclusively available under Proteintech Group brand and is not available to purchase from any other manufacturer.

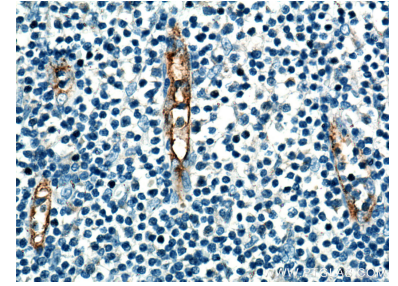
Selected Validation Data



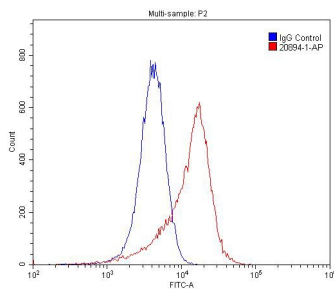
Jurkat cells were subjected to SDS PAGE followed by western blot with 20894-1-AP (E-selectin /CD62E antibody) at dilution of 1:300 incubated at room temperature for 1.5 hours.



Immunohistochemical analysis of paraffin-embedded human tonsillitis tissue slide using 20894-1-AP (E-selectin /CD62E antibody) at dilution of 1:1600 (under 10x lens). Heat mediated antigen retrieval with Tris-EDTA buffer (pH 9.0).



Immunohistochemical analysis of paraffin-embedded human tonsillitis tissue slide using 20894-1-AP (E-selectin /CD62E antibody) at dilution of 1:1600 (under 40x lens). Heat mediated antigen retrieval with Tris-EDTA buffer (pH 9.0).



1X10⁶ HUVEC cells were stained with 0.2ug E-selectin /CD62E antibody (20894-1-AP, red) and control antibody (blue). Fixed with 4% PFA blocked with 3% BSA (30 min). Alexa Fluor 488-conjugated AffiniPure Goat Anti-Rabbit IgG(H+L) with dilution 1:1500.