

For Research Use Only

ABHD14B Polyclonal ANTIBODY

Catalog Number: 20952-1-AP



Basic Information

Catalog Number:
20952-1-AP

Size:
35 µg/150 µl

Source:
Rabbit

Isotype:
IgG

Purification Method:
Antigen affinity purification

Immunogen Catalog Number:
AG15097

GenBank Accession Number:
BC007234

GeneID (NCBI):
84836

Full Name:
abhydrolase domain containing 14B

Calculated MW:
210aa, 22 kDa

Observed MW:
22-25 kDa

Recommended Dilutions:

WB 1:500-1:2400

IHC 1:20-1:200

IF 1:10-1:100

Applications

Tested Applications:

IF, IHC, WB, ELISA

Species Specificity:

human, mouse, rat

Note: suggested antigen retrieval with TE buffer pH 9.0; (*) Alternatively, antigen retrieval may be performed with citrate buffer pH 6.0

Positive Controls:

WB : L02 cells; mouse small intestine tissue

IHC : human prostate hyperplasia; tissue, human spleen tissue

IF : HepG2;

Background Information

Notable Publications

Author	Pubmed ID	Journal	Application
--------	-----------	---------	-------------

Storage

Storage:

Store at -20°C. Stable for one year after shipment.

Storage Buffer:

PBS with 0.02% sodium azide and 50% glycerol pH 7.3.

Aliquoting is unnecessary for -20°C storage

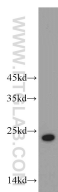
For technical support and original validation data for this product please contact:

T: 1 (888) 4PTGLAB (1-888-478-4522) (toll free in USA), or 1(312) 455-8498 (outside USA)

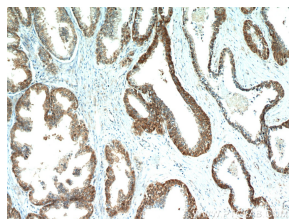
E: proteintech@ptglab.com
W: ptglab.com

This product is exclusively available under Proteintech Group brand and is not available to purchase from any other manufacturer.

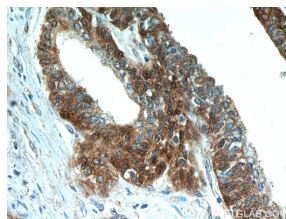
Selected Validation Data



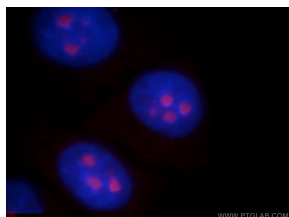
L02 cells were subjected to SDS PAGE followed by western blot with 20952-1-AP/ABHD14B antibody) at dilution of 1:400 incubated at room temperature for 1.5 hours



Immunohistochemical of paraffin-embedded human prostate hyperplasia using 20952-1-AP/ABHD14B antibody) at dilution of 1:50 (under 10x lens)



Immunohistochemical of paraffin-embedded human prostate hyperplasia using 20952-1-AP/ABHD14B antibody) at dilution of 1:50 (under 40x lens)



Immunofluorescent analysis of HepG2 cells, using ABHD14B antibody, 20952-1-AP at 1:25 dilution and Rhodamine-labeled goat anti-rabbit IgG (red). Blue pseudocolor = DAPI (fluorescent DNA dye).