

For Research Use Only

Cyclin T1 Polyclonal ANTIBODY



Catalog Number: 20992-1-AP **2 Publications**

Basic Information

Catalog Number: 20992-1-AP	GenBank Accession Number: NM_001240	Purification Method: Antigen affinity purification
Size: 150UL, Concentration: 380 µg/ml by Bradford method using BSA as the standard;	GeneID (NCBI): 904	Recommended Dilutions: WB 1:200-1:1000
Source: Rabbit	Full Name: cyclin T1	
Isotype: IgG	Calculated MW: 81 kDa	
	Observed MW: 87 kDa	

Applications

Tested Applications: WB, ELISA	Positive Controls: WB: K-562 cells, A431 cells, Y79 cells, Jurkat cells, HeLa cells
Cited Applications: WB	
Species Specificity: human	
Cited Species: human	

Background Information

CCNT1, also named as CytT1, belongs to the cyclin family and Cyclin C subfamily. It is a regulatory subunit of the cyclin-dependent kinase pair (CDK9/cyclin-T1) complex which also called positive transcription elongation factor B (P-TEFb). In case of HIV or SIV infections, CCNT1 binds to the transactivation domain of the viral nuclear transcriptional activator, Tat, thereby increasing Tat's affinity for the transactivating response RNA element (TAR RNA). CCNT1 serves as an essential cofactor for Tat, by promoting RNA Pol II activation, allowing transcription of viral genes. The antibody is specific to CCNT1.

Notable Publications

Author	Pubmed ID	Journal	Application
Gongwei Wu	28474697	Nat Commun	WB
Sebastian Eilebrecht	24623795	Nucleic Acids Res	WB

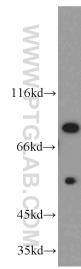
Storage

Storage:
Store at -20°C. Stable for one year after shipment.
Storage Buffer:
PBS with 0.02% sodium azide and 50% glycerol pH 7.3.
Aliquoting is unnecessary for -20°C storage

For technical support and original validation data for this product please contact:
T: 1 (888) 4PTGLAB (1-888-478-4522) (toll free in USA), or 1(312) 455-8498 (outside USA)
E: proteintech@ptglab.com
W: ptglab.com

This product is exclusively available under Proteintech Group brand and is not available to purchase from any other manufacturer.

Selected Validation Data



K-562 cells were subjected to SDS PAGE followed by western blot with 20992-1-AP (Cyclin T1 antibody) at dilution of 1:300 incubated at room temperature for 1.5 hours.