

For Research Use Only

# TMEM106B Polyclonal antibody



Catalog Number: 20995-1-AP **3 Publications**

## Basic Information

**Catalog Number:**

20995-1-AP

**Size:**

150UL, Concentration: 700 µg/ml by Nanodrop and 353 µg/ml by Bradford method using BSA as the standard;

**Source:**

Rabbit

**Isotype:**

IgG

**Immunogen Catalog Number:**

AG14264

**GenBank Accession Number:**

BC033901

**GeneID (NCBI):**

54664

**Full Name:**

transmembrane protein 106B

**Calculated MW:**

31 kDa

**Observed MW:**

31-35 kDa, 40-55 kDa

**Purification Method:**

Antigen affinity purification

**Recommended Dilutions:**

WB 1:500-1:2000

IP 0.5-4.0 µg for IP and 1:500-1:2000 for WB

IHC 1:20-1:200

IF 1:20-1:200

## Applications

**Tested Applications:**

IF, IHC, IP, WB, ELISA

**Cited Applications:**

IF, WB

**Species Specificity:**

human, mouse

**Cited Species:**

human, mouse

**Note-IHC: suggested antigen retrieval with TE buffer pH 9.0; (\*) Alternatively, antigen retrieval may be performed with citrate buffer pH 6.0**

**Positive Controls:**

WB: A549 cells, mouse brain tissue, human placenta tissue

IP: mouse brain tissue,

IHC: human brain tissue,

IF: HeLa cells,

## Background Information

TMEM106B is a genetic risk factor for frontotemporal lobar degeneration with TDP-43 inclusions (FTLD-TDP). Amyotrophic lateral sclerosis (ALS), like FTLD-TDP, is characterized by pathological TDP-43 inclusions. TMEM106B expression in the brain may be linked to mechanisms of disease in FTLD-TDP and risk alleles confer genetic susceptibility by increasing gene expression. TMEM106B can be showed as 31-55 kDa and 70-90 kDa (Glycosylated or Dimer) form in western blot test. (PMID: 27543298, 22895706, PMID: 23136129).

## Notable Publications

| Author                  | Pubmed ID | Journal             | Application |
|-------------------------|-----------|---------------------|-------------|
| Jun-Ichi Satoh          | 24684749  | Alzheimers Res Ther | WB          |
| Mi-Hee Jun              | 26651479  | Mol Brain           | IF          |
| Chen-Plotkin Alice S AS | 22895706  | J Neurosci          | WB          |

## Storage

**Storage:**

Store at -20°C. Stable for one year after shipment.

**Storage Buffer:**

PBS with 0.02% sodium azide and 50% glycerol pH 7.3.

Aliquoting is unnecessary for -20°C storage

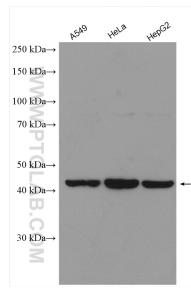
For technical support and original validation data for this product please contact:

T: 1 (888) 4PTGLAB (1-888-478-4522) (toll free in USA), or 1(312) 455-8498 (outside USA)

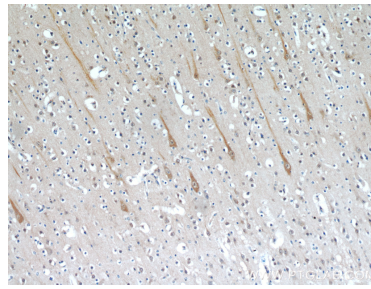
E: proteintech@ptglab.com  
W: ptglab.com

**This product is exclusively available under Proteintech Group brand and is not available to purchase from any other manufacturer.**

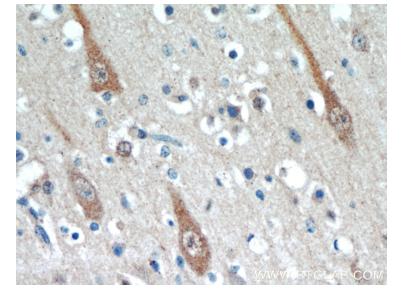
## Selected Validation Data



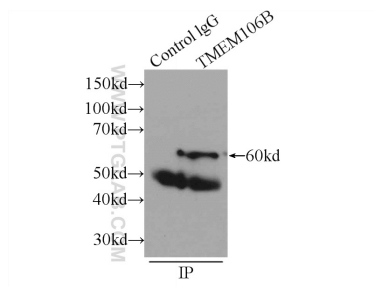
Various lysates were subjected to SDS PAGE followed by western blot with 20995-1-AP (TMEM106B antibody) at dilution of 1:1000 incubated at room temperature for 1.5 hours.



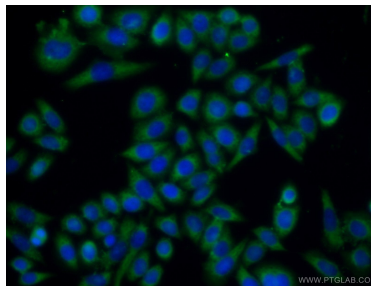
Immunohistochemical analysis of paraffin-embedded human brain using 20995-1-AP (TMEM106B antibody) at dilution of 1:100 (under 10x lens).



Immunohistochemical analysis of paraffin-embedded human brain using 20995-1-AP (TMEM106B antibody) at dilution of 1:100 (under 40x lens).



IP Result of anti-TMEM106B (IP:20995-1-AP, 3ug; Detection:20995-1-AP 1:1000) with mouse brain tissue lysate 6000ug.



Immunofluorescent analysis of HeLa cells using 20995-1-AP (TMEM106B antibody) at dilution of 1:50 and Alexa Fluor 488-conjugated AffiniPure Goat Anti-Rabbit IgG(H+L).