

For Research Use Only

GLUT4 Polyclonal antibody

Catalog Number: 21048-1-AP **18 Publications**



Basic Information

Catalog Number: 21048-1-AP	GenBank Accession Number: BC069615	Purification Method: Antigen affinity purification
Size: 150UL, Concentration: 187 µg/ml by Bradford method using BSA as the standard;	GeneID (NCBI): 6517	Recommended Dilutions: WB 1:200-1:500 IHC 1:50-1:500
Source: Rabbit	Full Name: solute carrier family 2 (facilitated glucose transporter), member 4	
Isotype: IgG	Calculated MW: 509 aa, 55 kDa	
Immunogen Catalog Number: AG15390	Observed MW: 50-55 kDa	

Applications

Tested Applications: IHC, WB, ELISA	Positive Controls: WB: mouse adipose tissue, mouse brain tissue, rat brain tissue IHC: mouse skeletal muscle tissue, mouse cerebellum tissue, human heart tissue
Cited Applications: IHC	
Species Specificity: human, mouse, rat	
Cited Species: human, mouse, rat	
Note-IHC: suggested antigen retrieval with TE buffer pH 9.0; (*) Alternatively, antigen retrieval may be performed with citrate buffer pH 6.0	

Background Information

GLUT4 is a member of GLUT family of transmembrane hexose transporters. It is an INS receptor that mediates INS-stimulated glucose transport in fat and muscle where it is predominantly expressed. In response to INS stimulation, GLUT4 experienced translocation from trans-Golgi network to plasma membrane. The impairment of GLUT4 translocation is associated with diabetes.

Notable Publications

Author	Pubmed ID	Journal	Application
Haoran Li	28990097	Mol Med Rep	
Krishna B Singh	31555797	Carcinogenesis	
Brent A Fujimoto	31593505	Am J Physiol Endocrinol Metab	

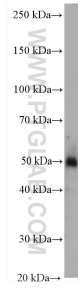
Storage

Storage:
Store at -20°C. Stable for one year after shipment.
Storage Buffer:
PBS with 0.1% sodium azide and 50% glycerol pH 7.3.
Aliquoting is unnecessary for -20°C storage

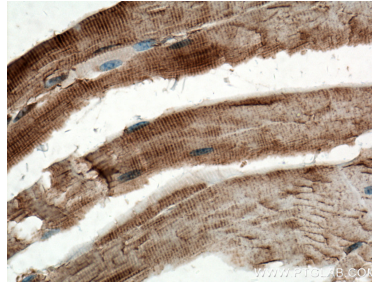
For technical support and original validation data for this product please contact:
T: 1 (888) 4PTGLAB (1-888-478-4522) (toll free in USA), or 1(312) 455-8498 (outside USA)
E: proteintech@ptglab.com
W: ptglab.com

This product is exclusively available under Proteintech Group brand and is not available to purchase from any other manufacturer.

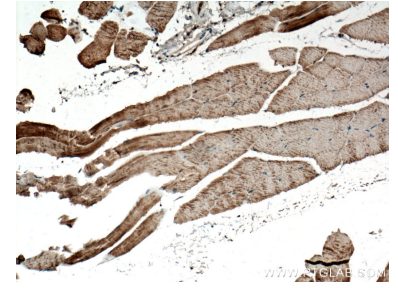
Selected Validation Data



mouse adipose tissue were subjected to SDS PAGE followed by western blot with 21048-1-AP (GLUT4 antibody) at dilution of 1:300 incubated at room temperature for 1.5 hours.



Immunohistochemical analysis of paraffin-embedded mouse skeletal muscle tissue slide using 21048-1-AP (GLUT4 antibody) at dilution of 1:200 (under 40x lens. Heat mediated antigen retrieval with Tris-EDTA buffer (pH 9.0).



Immunohistochemical analysis of paraffin-embedded mouse skeletal muscle tissue slide using 21048-1-AP (GLUT4 antibody) at dilution of 1:200 (under 10x lens. Heat mediated antigen retrieval with Tris-EDTA buffer (pH 9.0).