

For Research Use Only

# C1orf107 Polyclonal antibody

Catalog Number: 21076-1-AP



## Basic Information

**Catalog Number:**

21076-1-AP

**Size:**

150UL, Concentration: 500 µg/ml by Nanodrop and 387 µg/ml by Bradford method using BSA as the standard;

**Source:**

Rabbit

**Isotype:**

IgG

**Immunogen Catalog Number:**

AG15250

**GenBank Accession Number:**

BC022964

**GeneID (NCBI):**

27042

**Full Name:**

chromosome 1 open reading frame 107

**Calculated MW:**

756 aa, 87 kDa

**Observed MW:**

87-100 kDa

**Purification Method:**

Antigen affinity purification

**Recommended Dilutions:**

WB 1:200-1:1000

IP 0.5-4.0 µg for IP and 1:200-1:1000 for WB

## Applications

**Tested Applications:**

IP, WB, ELISA

**Species Specificity:**

human

**Positive Controls:**

WB : HepG2 cells,

IP : HepG2 cells,

## Background Information

### Storage

**Storage:**

Store at -20°C. Stable for one year after shipment.

**Storage Buffer:**

PBS with 0.02% sodium azide and 50% glycerol pH 7.3.

Aliquoting is unnecessary for -20°C storage

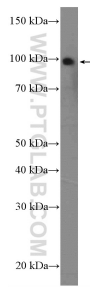
For technical support and original validation data for this product please contact:

T: 1 (888) 4PTGLAB (1-888-478-4522) (toll free in USA), or 1(312) 455-8498 (outside USA)

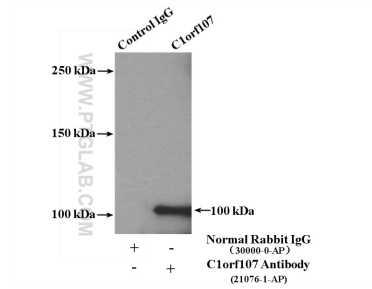
E: [proteintech@ptglab.com](mailto:proteintech@ptglab.com)  
W: [ptglab.com](http://ptglab.com)

**This product is exclusively available under Proteintech Group brand and is not available to purchase from any other manufacturer.**

## Selected Validation Data



HepG2 cells were subjected to SDS PAGE followed by western blot with 21076-1-AP (C1orf107 Antibody) at dilution of 1:300 incubated at room temperature for 1.5 hours.



IP Result of anti-C1orf107 (IP:21076-1-AP, 4ug; Detection:21076-1-AP 1:300) with HepG2 cells lysate 1000ug.