

ACE2 Polyclonal ANTIBODY

Catalog Number: 21115-1-AP

3 Publications

Basic Information

Catalog Number:
21115-1-AP

Size:
64 µg/150 µl

Source:
Rabbit

Isotype:
IgG

Purification Method:
Antigen affinity purification

Immunogen Catalog Number:
AG15455

GenBank Accession Number:
BC048094

GeneID (NCBI):
59272

Full Name:
angiotensin I converting enzyme (peptidyl-
dipeptidase A) 2

Calculated MW:
805aa, 92 kDa

Observed MW:
120 kDa, 92 kDa

Recommended Dilutions:

WB 1:1000-1:4000

IP 0.5-4.0 µg for IP and 1:500-1:2000 for WB

Applications

Tested Applications:

IP, WB, ELISA

Cited Applications:

WB

Species Specificity:
human, mouse, rat

Cited Species:
human, mouse

**Note: suggested antigen retrieval with TE
buffer pH 9.0; (*) Alternatively, antigen
retrieval may be performed with citrate
buffer pH 6.0**

Positive Controls:

WB : mouse kidney tissue; human skeletal muscle
tissue

IP : mouse kidney tissue;

Background Information

ACE2 contains a potential 17-amino acid N-terminal signal peptide and a putative 22-amino acid C-terminal membrane anchor. It is the only known mammalian homologue of the zinc-metalloproteinase angiotensin-converting enzyme (ACE), a critical regulator of the renin-angiotensin system. ACE2 has a more restricted tissue distribution than ACE, being found predominantly in the heart, kidneys, and testes although low levels have been detected in a variety of tissues (PMD:15983030). The calculated molecular weight of ACE2 is 92kDa but it migrates to 120kDa due to N-glycosylation (PMD:16166094). It has 2 isoforms produced by alternative splicing. This antibody is specific to ACE2.

Notable Publications

Author	Pubmed ID	Journal	Application
Wen Li	28977802	Cell Physiol Biochem	WB
Yoshiki Ogata	30421564	Eur J Pain	WB
Ranjith Kumar Kankala	31066236	Small	WB

Storage

Storage:

Store at -20°C. Stable for one year after shipment.

Storage Buffer:

PBS with 0.02% sodium azide and 50% glycerol pH 7.3.

Aliquoting is unnecessary for -20°C storage

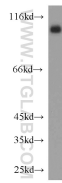
For technical support and original validation data for this
product please contact:

T: 1 (888) 4PTGLAB (1-888-478-4522) (toll
free in USA), or 1(312) 455-8498 (outside
USA)

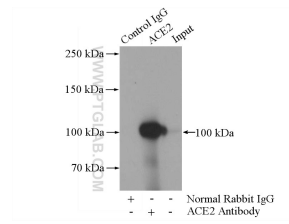
E: proteintech@ptglab.com
W: ptglab.com

This product is exclusively available under
Proteintech Group brand and is not available to
purchase from any other manufacturer.

Selected Validation Data



mouse kidney tissue were subjected to SDS PAGE followed by western blot with 21115-1-AP(ACE2 antibody) at dilution of 1:1000, incubated at room temperature for 1.5 hours



IP Result of anti-ACE2 (IP:21115-1-AP, 5ug; Detection:21115-1-AP 1:1000) with mouse kidney tissue lysate 4000ug.