

For Research Use Only

BBS1 Polyclonal ANTIBODY

Catalog Number: 21118-1-AP



Basic Information

Catalog Number:

21118-1-AP

Size:

150UL, Concentration: 500 µg/ml by Bradford method using BSA as the standard;

Source:

Rabbit

Isotype:

IgG

Immunogen Catalog Number:

AG15460

GenBank Accession Number:

BC047642

GeneID (NCBI):

582

Full Name:

Bardet-Biedl syndrome 1

Calculated MW:

593 aa, 65 kDa

Observed MW:

65 kDa

Purification Method:

Antigen affinity purification

Recommended Dilutions:

WB 1:500-1:1000

IP 0.5-4.0 µg for IP and 1:500-1:1000 for WB

IF 1:20-1:200

Applications

Tested Applications:

IF, IP, WB, ELISA

Species Specificity:

human, mouse

Positive Controls:

WB: mouse kidney tissue, mouse brain tissue, mouse heart tissue

IP: mouse brain tissue,

IF: hTERT-RPE1 cells,

Background Information

Storage

Storage:

Store at -20°C. Stable for one year after shipment.

Storage Buffer:

PBS with 0.1% sodium azide and 50% glycerol pH 7.3.

Aliquoting is unnecessary for -20°C storage

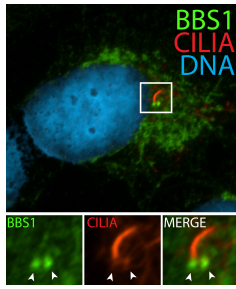
For technical support and original validation data for this product please contact:

T: 1 (888) 4PTGLAB (1-888-478-4522) (toll free in USA), or 1(312) 455-8498 (outside USA)

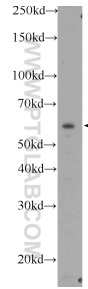
E: proteintech@ptglab.com
W: ptglab.com

This product is exclusively available under Proteintech Group brand and is not available to purchase from any other manufacturer.

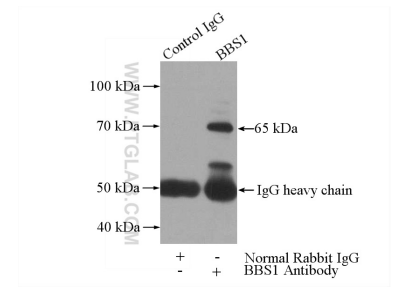
Selected Validation Data



IF result (base of ciliary stain) of anti-BBS1 (21118-1-AP, 1:50) with with serum-starved hTERT-RPE1 cells by Dr. Moshe Kim.



mouse kidney tissue were subjected to SDS PAGE followed by western blot with 21118-1-AP (BBS1 Antibody) at dilution of 1:600 incubated at room temperature for 1.5 hours.



IP Result of anti-BBS1 (IP:21118-1-AP, 4ug; Detection:21118-1-AP 1:600) with mouse brain tissue lysate 4000ug.