

For Research Use Only

BCL6 Polyclonal antibody

Catalog Number: 21187-1-AP **11 Publications**



Basic Information

Catalog Number: 21187-1-AP	GenBank Accession Number: BC150184	Purification Method: Antigen affinity purification
Size: 150ul , Concentration: 600 µg/ml by Nanodrop and 273 µg/ml by Bradford method using BSA as the standard;	GeneID (NCBI): 604	Recommended Dilutions: WB 1:500-1:3000 IP 0.5-4.0 ug for IP and 1:500-1:2000 for WB
Source: Rabbit	Full Name: B-cell CLL/Lymphoma 6	Calculated MW: 706 aa, 79 kDa
Isotype: IgG	Observed MW: 79-95 kDa	Immunogen Catalog Number: AG15519

Applications

Tested Applications: FC, IHC, IP, WB, ELISA	Positive Controls: WB : Raji cells, IP : Raji cells, IHC : human lymphoma tissue, human tonsillitis tissue
Cited Applications: IHC, WB	
Species Specificity: human	
Cited Species: human, mouse	
Note-IHC: suggested antigen retrieval with TE buffer pH 9.0; (*) Alternatively, antigen retrieval may be performed with citrate buffer pH 6.0	

Background Information

BCL6, a zinc finger transcription factor, contains a N-terminal BTB/POZ domain and C-terminal zinc finger DNA-binding motifs and represses transcription of a wide range of target proteins and microRNAs. BCL6 protein has been reported as a master regulator of B lymphocyte development and growth, and altered BCL6 protein expression was implicated in pathogenesis of diverse human hematologic malignancies, especially in the diffuse large B cell lymphoma (DLBCL). BCL6 is required for the development of T follicular helper T cells (TFH), a helper T cell subset required for the formation of mature and productive GCs. BCL6 has also been shown to play important regulatory roles in macrophages.

Notable Publications

Author	Pubmed ID	Journal	Application
Ranran Sun	33008587	Biochem Biophys Res Commun	WB
Lai Chen	33191180	Int Immunopharmacol	WB
Fenglin Guo	29885805	Vet Microbiol	WB

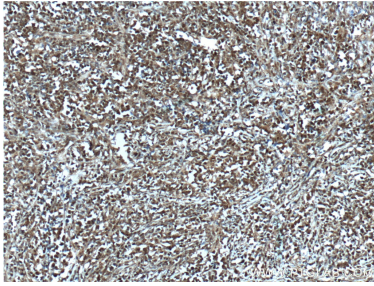
Storage

Storage:
Store at -20°C. Stable for one year after shipment.
Storage Buffer:
PBS with 0.02% sodium azide and 50% glycerol pH 7.3.
Aliquoting is unnecessary for -20°C storage

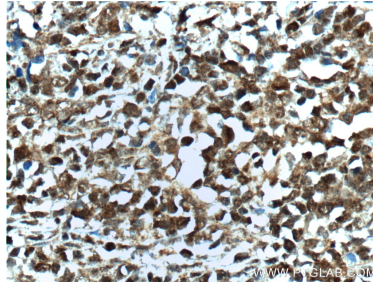
For technical support and original validation data for this product please contact:
T: 1 (888) 4PTGLAB (1-888-478-4522) (toll free in USA), or 1(312) 455-8498 (outside USA)
E: proteintech@ptglab.com
W: ptglab.com

This product is exclusively available under Proteintech Group brand and is not available to purchase from any other manufacturer.

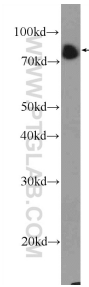
Selected Validation Data



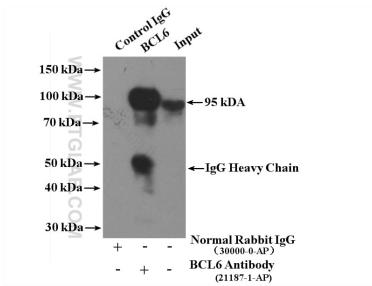
Immunohistochemical analysis of paraffin-embedded human lymphoma tissue slide using 21187-1-AP (BCL6 Antibody) at dilution of 1:400 (under 10x lens). Heat mediated antigen retrieved with Sodium Citrate buffer (pH 6.0).



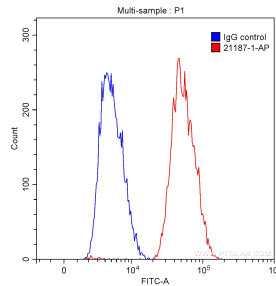
Immunohistochemical analysis of paraffin-embedded human lymphoma tissue slide using 21187-1-AP (BCL6 Antibody) at dilution of 1:400 (under 40x lens). Heat mediated antigen retrieved with Sodium Citrate buffer (pH 6.0).



Raji cells were subjected to SDS PAGE followed by western blot with 21187-1-AP (BCL6 Antibody) at dilution of 1:1500 incubated at room temperature for 1.5 hours.



IP Result of anti-BCL6 (IP:21187-1-AP, 4ug; Detection:21187-1-AP 1:1000) with Raji cells lysate 1400ug.



1x10⁶ Ramos cells were intracellularly stained with 0.20 ug/test Anti-Human BCL6 (21187-1-AP) (red) or 0.20 ug control antibody (blue) and CoraLite® 488-Conjugated AffiniPure Goat Anti-Rabbit IgG(H+L) with dilution 1:1000. Fixed with 90% MeOH.