

For Research Use Only

# TTC39A Polyclonal antibody

Catalog Number: 21323-1-AP

1 Publications



## Basic Information

<b>Catalog Number:</b> 21323-1-AP	<b>GenBank Accession Number:</b> BC004399	<b>Purification Method:</b> Antigen affinity purification
<b>Size:</b> 150ul , Concentration: 600 ug/ml by Nanodrop;	<b>GeneID (NCBI):</b> 22996	<b>Recommended Dilutions:</b> WB: 1:500-1:1000 IHC: 1:20-1:200 IF/ICC: 1:10-1:100
<b>Source:</b> Rabbit	<b>UNIPROT ID:</b> Q5SRH9	
<b>Isotype:</b> IgG	<b>Full Name:</b> tetra(ricopeptide repeat domain 39A	
<b>Immunogen Catalog Number:</b> AG14874	<b>Calculated MW:</b> 613 aa, 70 kDa	
	<b>Observed MW:</b> 65-70 kDa	

## Applications

<b>Tested Applications:</b> WB, IHC, IF/ICC, ELISA	<b>Positive Controls:</b> WB : mouse liver tissue, MCF-7 cells IHC : human breast cancer tissue, human testis tissue IF/ICC : HepG2 cells, Hela cells
<b>Cited Applications:</b> IHC	
<b>Species Specificity:</b> human, mouse, rat	
<b>Cited Species:</b> human	
<b>Note-IHC: suggested antigen retrieval with TE buffer pH 9.0; (*) Alternatively, antigen retrieval may be performed with citrate buffer pH 6.0</b>	

## Notable Publications

Author	Pubmed ID	Journal	Application
Beini Cen	41457788	Cancer Rep (Hoboken)	IHC

## Storage

**Storage:**  
Store at -20°C. Stable for one year after shipment.  
**Storage Buffer:**  
PBS with 0.02% sodium azide and 50% glycerol, pH7.3  
Aliquoting is unnecessary for -20°C storage

\*\*\* 20ul sizes contain 0.1% BSA

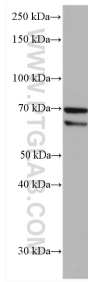
For technical support and original validation data for this product please contact:

T: 1 (888) 4PTGLAB (1-888-478-4522) (toll free in USA), or 1(312) 455-8498 (outside USA)

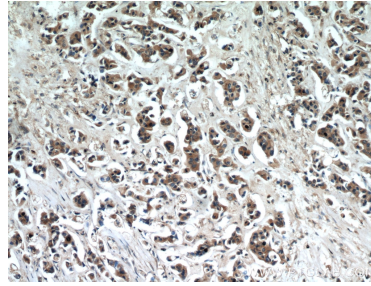
E: proteintech@ptglab.com  
W: ptglab.com

This product is exclusively available under Proteintech Group brand and is not available to purchase from any other manufacturer.

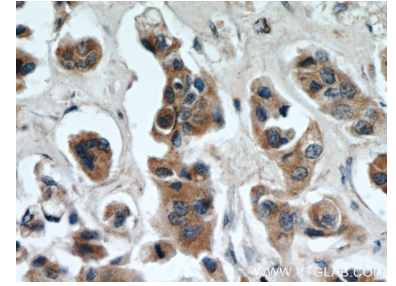
## Selected Validation Data



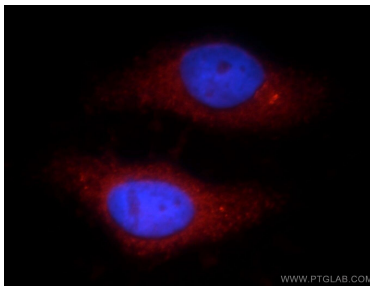
mouse liver tissue were subjected to SDS PAGE followed by western blot with 21323-1-AP (TTC39A antibody) at dilution of 1:800 incubated at room temperature for 1.5 hours.



Immunohistochemical analysis of paraffin-embedded human breast cancer using 21323-1-AP (TTC39A antibody) at dilution of 1:50 (under 10x lens).



Immunohistochemical analysis of paraffin-embedded human breast cancer using 21323-1-AP (TTC39A antibody) at dilution of 1:50 (under 40x lens).



Immunofluorescent analysis of HepG2 cells, using TTC39A antibody 21323-1-AP at 1:25 dilution and Rhodamine-labeled goat anti-rabbit IgG (red). Blue pseudocolor = DAPI (fluorescent DNA dye).