

For Research Use Only

Cingulin Polyclonal antibody

Catalog Number: 21369-1-AP

Featured Product

12 Publications



Basic Information

Catalog Number:

21369-1-AP

Size:

150ul, Concentration: 450 ug/ml by Nanodrop and 267 ug/ml by Bradford method using BSA as the standard;

Source:

Rabbit

Isotype:

IgG

Immunogen Catalog Number:

AG15843

GenBank Accession Number:

BC146657

GeneID (NCBI):

57530

UNIPROT ID:

Q9P2M7

Full Name:

cingulin

Calculated MW:

1197 aa, 136 kDa

Observed MW:

136-150 kDa

Purification Method:

Antigen affinity purification

Recommended Dilutions:

WB: 1:2000-1:10000

IP: 0.5-4.0 ug for 1.0-3.0 mg of total protein lysate

IHC: 1:400-1:1600

Applications

Tested Applications:

WB, IHC, IP, ELISA

Cited Applications:

WB, IHC, IF, IP

Species Specificity:

human, mouse, rat

Cited Species:

human, mouse, rat, canine

Note-IHC: suggested antigen retrieval with TE buffer pH 9.0; (*) Alternatively, antigen retrieval may be performed with citrate buffer pH 6.0

Positive Controls:

WB: HEK-293T cells, mouse kidney tissue, mouse small intestine tissue, MCF-7 cells

IP: mouse kidney tissue,

IHC: human ovary cancer tissue,

Background Information

Cingulin is a component of the cytoplasmic plaque of tight junction, and is localized on the cytoplasmic face of tight junctions of polarized epithelia and some endothelia. Cingulin is a homodimer, each subunit containing a globular "head" domain, a coiled-coil "rod" domain and a small globular "tail" region. Cingulin can interact with ZO-1, ZO-2, ZO-3, actin, and myosin. It probably plays a role in the formation and regulation of the tight junction paracellular permeability barrier.

Notable Publications

| Author | Pubmed ID | Journal | Application |
|---------------|-----------|-----------------|-------------|
| Jiayao Ou | 34697434 | Mucosal Immunol | WB,IF |
| Xiaohui Zhang | 34830864 | Cancers (Basel) | WB,IHC |
| Zhi Xiong | 29961810 | Biol Reprod | IF |

Storage

Storage:

Store at -20°C. Stable for one year after shipment.

Storage Buffer:

PBS with 0.02% sodium azide and 50% glycerol, pH7.3

Aliquoting is unnecessary for -20°C storage

*** 20ul sizes contain 0.1% BSA

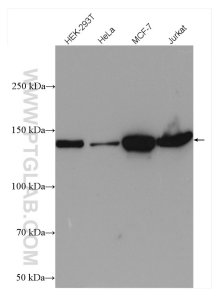
For technical support and original validation data for this product please contact:

T: 1 (888) 4PTGLAB (1-888-478-4522) (toll free in USA), or 1(312) 455-8498 (outside USA)

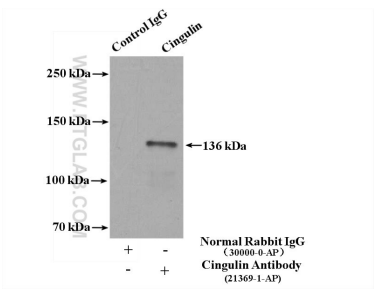
E: proteintech@ptglab.com
W: ptglab.com

This product is exclusively available under Proteintech Group brand and is not available to purchase from any other manufacturer.

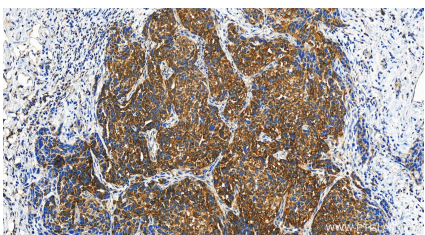
Selected Validation Data



Various lysates were subjected to SDS PAGE followed by western blot with 21369-1-AP (Cingulin antibody) at dilution of 1:5000 incubated at room temperature for 1.5 hours.



IP result of anti-Cingulin (IP:21369-1-AP, 4ug; Detection:21369-1-AP 1:800) with mouse kidney tissue lysate 4800ug.



Immunohistochemical analysis of paraffin-embedded human ovary cancer tissue slide using 21369-1-AP (Cingulin antibody) at dilution of 1:800 (under 20x lens). Heat mediated antigen retrieval with Tris-EDTA buffer (pH 9.0).