

For Research Use Only

# PLCB3 Polyclonal antibody

Catalog Number: 21370-1-AP



## Basic Information

**Catalog Number:**

21370-1-AP

**Size:**

150ul, Concentration: 500 ug/ml by Nanodrop and 367 ug/ml by Bradford method using BSA as the standard;

**Source:**

Rabbit

**Isotype:**

IgG

**Immunogen Catalog Number:**

AG15845

**GenBank Accession Number:**

BC142681

**GeneID (NCBI):**

5331

**UNIPROT ID:**

Q01970

**Full Name:**

phospholipase C, beta 3  
(phosphatidylinositol-specific)

**Calculated MW:**

1234 aa, 139 kDa

**Observed MW:**

150 kDa

**Purification Method:**

Antigen affinity purification

**Recommended Dilutions:**

WB 1:500-1:1000

IHC 1:50-1:500

## Applications

**Tested Applications:**

WB, IHC, ELISA

**Species Specificity:**

human, mouse

**Note-IHC: suggested antigen retrieval with TE buffer pH 9.0; (\*) Alternatively, antigen retrieval may be performed with citrate buffer pH 6.0**

**Positive Controls:**

**WB :** MCF-7 cells, A431 cells, COLO 320 cells, HEK-293T cells, NIH/3T3 cells

**IHC :** human colon tissue,

## Background Information

PLCB3 is a member of the phosphoinositide phospholipase C beta enzyme family that catalyze the production of the secondary messengers diacylglycerol and inositol 1,4,5-triphosphate from phosphatidylinositol in G-protein-linked receptor-mediated signal transduction. Six subfamilies of PLCs (B, G, D, E, Z and H) constitute part of ubiquitous signaling cascades that translate hormonal signals into intracellular events, leading to alternations in cell function. PLCB isoforms 1-4 are stimulated by G-protein activation (Gaq/11 and/or Gβγ). Independent of its enzymatic activity, PLCB3 inhibits the proliferation of hematopoietic stem cells (HSCs) and myeloid cells.

## Storage

**Storage:**

Store at -20°C. Stable for one year after shipment.

**Storage Buffer:**

PBS with 0.02% sodium azide and 50% glycerol, pH7.3

Aliquoting is unnecessary for -20°C storage

\*\*\* 20ul sizes contain 0.1% BSA

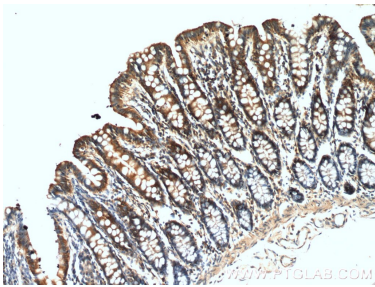
For technical support and original validation data for this product please contact:

T: 1 (888) 4PTGLAB (1-888-478-4522) (toll free in USA), or 1(312) 455-8498 (outside USA)

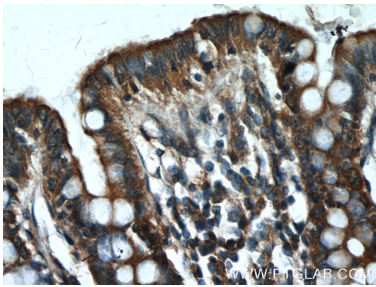
E: [proteintech@ptglab.com](mailto:proteintech@ptglab.com)  
W: [ptglab.com](http://ptglab.com)

This product is exclusively available under Proteintech Group brand and is not available to purchase from any other manufacturer.

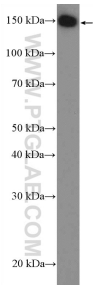
Selected Validation Data



Immunohistochemical analysis of paraffin-embedded human colon tissue slide using 21370-1-AP (PLCB3 Antibody) at dilution of 1:200 (under 10x lens).



Immunohistochemical analysis of paraffin-embedded human colon tissue slide using 21370-1-AP (PLCB3 Antibody) at dilution of 1:200 (under 40x lens).



MCF-7 cells were subjected to SDS PAGE followed by western blot with 21370-1-AP (PLCB3 Antibody) at dilution of 1:600 incubated at room temperature for 1.5 hours.