

For Research Use Only

CHIT1 Polyclonal antibody

Catalog Number: 21432-1-AP



Basic Information

Catalog Number: 21432-1-AP	GenBank Accession Number: BC103695	Purification Method: Antigen affinity purification
Size: 150ul , Concentration: 247 µg/ml by Bradford method using BSA as the standard;	GeneID (NCBI): 1118	Recommended Dilutions: IHC 1:50-1:500
Source: Rabbit	Full Name: chitinase 1 (chitotriosidase)	
Isotype: IgG	Calculated MW: 466 aa, 52 kDa	
Immunogen Catalog Number: AG16039	Observed MW: 55 kDa	

Applications

Tested Applications: IHC, ELISA	Positive Controls: IHC : human pancreas tissue,
Species Specificity: human	
Note-IHC: suggested antigen retrieval with TE buffer pH 9.0; (*) Alternatively, antigen retrieval may be performed with citrate buffer pH 6.0	

Background Information

Storage

Storage:
Store at -20°C. Stable for one year after shipment.
Storage Buffer:
PBS with 0.02% sodium azide and 50% glycerol pH 7.3.
Aliquoting is unnecessary for -20°C storage

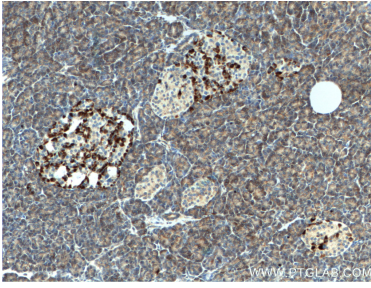
For technical support and original validation data for this product please contact:

T: 1 (888) 4PTGLAB (1-888-478-4522) (toll free in USA), or 1(312) 455-8498 (outside USA)

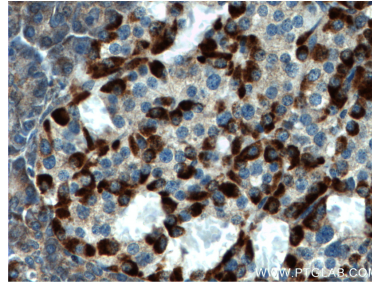
E: proteintech@ptglab.com
W: ptglab.com

This product is exclusively available under Proteintech Group brand and is not available to purchase from any other manufacturer.

Selected Validation Data



Immunohistochemical analysis of paraffin-embedded human pancreas tissue slide using 21432-1-AP (CHIT1 antibody) at dilution of 1:200 (under 10x lens).



Immunohistochemical analysis of paraffin-embedded human pancreas tissue slide using 21432-1-AP (CHIT1 antibody) at dilution of 1:200 (under 40x lens).