

For Research Use Only

# Rubicon Polyclonal ANTIBODY



Catalog Number: 21444-1-AP

Featured Product

3 Publications

## Basic Information

Catalog Number:  
21444-1-AP

Size:  
70 µg/150 µl

Source:  
Rabbit

Isotype:  
IgG

Purification Method:  
Antigen affinity purification

Immunogen Catalog Number:  
AG13715

GenBank Accession Number:  
BC033615

GeneID (NCBI):  
9711

Full Name:  
KIAA0226

Calculated MW:  
972aa, 109 kDa

Observed MW:  
110-130 kDa

Recommended Dilutions:

WB 1:500-1:2000

IHC 1:20-1:200

## Applications

Tested Applications:

IHC, WB, ELISA

Cited Applications:

IF, IHC, WB

Species Specificity:

human, mouse, rat

Cited Species:

human, rat

**Note: suggested antigen retrieval with TE buffer pH 9.0; (\*) Alternatively, antigen retrieval may be performed with citrate buffer pH 6.0**

Positive Controls:

WB : mouse liver tissue; A549 cells, HeLa cells

IHC : human testis tissue; human tonsillitis tissue

## Background Information

### Notable Publications

| Author               | Pubmed ID | Journal          | Application |
|----------------------|-----------|------------------|-------------|
| Luis Muniz-Feliciano | 28933590  | Autophagy        | WB, IF      |
| Xing Huang           | 30786811  | Autophagy        | WB          |
| Yushun Wan           | 28392573  | Cell Mol Immunol | WB, IHC     |

## Storage

Storage:

Store at -20°C. Stable for one year after shipment.

Storage Buffer:

PBS with 0.02% sodium azide and 50% glycerol pH 7.3.

Aliquoting is unnecessary for -20°C storage

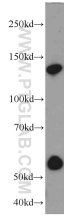
For technical support and original validation data for this product please contact:

T: 1 (888) 4PTGLAB (1-888-478-4522) (toll free in USA), or 1(312) 455-8498 (outside USA)

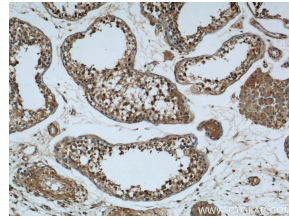
E: [proteintech@ptglab.com](mailto:proteintech@ptglab.com)  
W: [ptglab.com](http://ptglab.com)

This product is exclusively available under Proteintech Group brand and is not available to purchase from any other manufacturer.

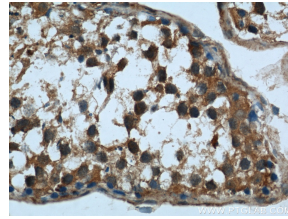
## Selected Validation Data



mouse liver tissue were subjected to SDS PAGE followed by western blot with 21444-1-AP(Rubicon antibody) at dilution of 1:1000 incubated at room temperature for 1.5 hours



Immunohistochemical of paraffin-embedded human testis using 21444-1-AP(Rubicon antibody) at dilution of 1:50 (under 10x lens)



Immunohistochemical of paraffin-embedded human testis using 21444-1-AP(Rubicon antibody) at dilution of 1:50 (under 40x lens)