

For Research Use Only

XRCC1 Polyclonal antibody

Catalog Number: 21468-1-AP

Featured Product

10 Publications



Basic Information

Catalog Number: 21468-1-AP	GenBank Accession Number: BC023593	Purification Method: Antigen affinity purification
Size: 150ul, Concentration: 550 ug/ml by Nanodrop;	GeneID (NCBI): 7515	Recommended Dilutions: WB 1:2000-1:12000
Source: Rabbit	UNIPROT ID: P18887	IHC 1:500-1:2000
Isotype: IgG	Full Name: X-ray repair complementing defective repair in Chinese hamster cells 1	IF/ICC 1:200-1:800
Immunogen Catalog Number: AG15172	Calculated MW: 633 aa, 70 kDa	
	Observed MW: 80-90 kDa	

Applications

Tested Applications: WB, IHC, IF/ICC, ELISA	Positive Controls: WB : HEK-293 cells, K-562 cells, Jurkat cells
Cited Applications: WB, IHC	IHC : human colon cancer tissue,
Species Specificity: human	IF/ICC : A431 cells,
Cited Species: human	
Note-IHC: suggested antigen retrieval with TE buffer pH 9.0; (*) Alternatively, antigen retrieval may be performed with citrate buffer pH 6.0	

Background Information

XRCC1 (X-ray Repair Cross Complementing group 1) is a molecular scaffold protein that interacts with multiple enzymatic components of DNA single-strand break repair (SSBR) including DNA kinase, DNA phosphatase, DNA polymerase, DNA deadenylase, and DNA ligase activities that collectively are capable of accelerating the repair of a broad range of DNA single-strand breaks (SSBs) (PMID: 18515191). XRCC1 is 633 amino acids in length which is comprised of an N-terminal domain (NTD) of ~160 amino acids that interacts with Pol β , a central BRCT domain of ~90 amino acids that interacts with PARP1 (PMID: 9584196).

Notable Publications

Author	Pubmed ID	Journal	Application
Mingming Yang	35648484	Nucleic Acids Res	WB
Hui Dong	25818601	Toxicol Appl Pharmacol	WB
Xingjie Gao	31338966	J Cell Mol Med	WB

Storage

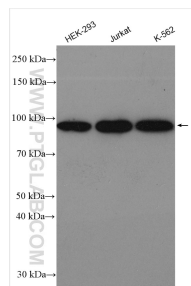
Storage:
Store at -20°C. Stable for one year after shipment.
Storage Buffer:
PBS with 0.02% sodium azide and 50% glycerol
Aliquoting is unnecessary for -20°C storage

*** 20ul sizes contain 0.1% BSA

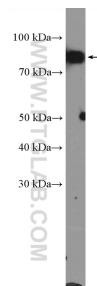
For technical support and original validation data for this product please contact:
T: 1 (888) 4PTGLAB (1-888-478-4522) (toll free in USA), or 1(312) 455-8498 (outside USA)
E: proteintech@ptglab.com
W: ptglab.com

This product is exclusively available under Proteintech Group brand and is not available to purchase from any other manufacturer.

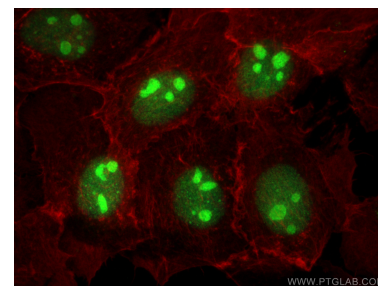
Selected Validation Data



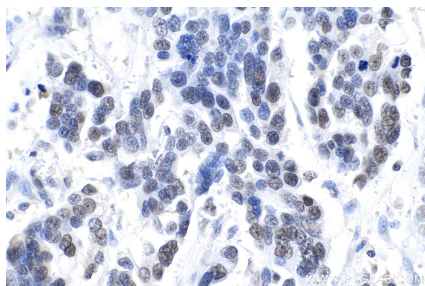
Various lysates were subjected to SDS PAGE followed by western blot with 21468-1-AP (XRCC1 antibody) at dilution of 1:6000 incubated at room temperature for 1.5 hours.



K-562 cells were subjected to SDS PAGE followed by western blot with 21468-1-AP (XRCC1 Antibody) at dilution of 1:600 incubated at room temperature for 1.5 hours.



Immunofluorescent analysis of (4% PFA) fixed A431 cells using XRCC1 antibody (21468-1-AP) at dilution of 1:400 and Multi-rAb CoraLite® Plus 488-Goat Anti-Rabbit Recombinant Secondary Antibody (H+L) (RGAR002), CL594-Phalloidin (red).



Immunohistochemical analysis of paraffin-embedded human colon cancer tissue slide using 21468-1-AP (XRCC1 antibody) at dilution of 1:1000 (under 40x lens).