

For Research Use Only

# TXNDC16 Polyclonal antibody

Catalog Number: 21502-1-AP



## Basic Information

<b>Catalog Number:</b> 21502-1-AP	<b>GenBank Accession Number:</b> BC142650	<b>Purification Method:</b> Antigen affinity purification
<b>Size:</b> 150ul , Concentration: 200 ug/ml by Nanodrop and 140 ug/ml by Bradford method using BSA as the standard;	<b>GeneID (NCBI):</b> 57544	<b>Recommended Dilutions:</b> WB 1:500-1:2000 IHC 1:50-1:500 IF/ICC 1:20-1:200
<b>Source:</b> Rabbit	<b>UNIPROT ID:</b> Q9P2K2	
<b>Isotype:</b> IgG	<b>Full Name:</b> thioredoxin domain containing 16	
<b>Immunogen Catalog Number:</b> AG15946	<b>Calculated MW:</b> 825 aa, 94 kDa	
	<b>Observed MW:</b> 100-105 kDa	

## Applications

**Tested Applications:**  
WB, IHC, IF/ICC, ELISA

**Species Specificity:**  
human

**Note-IHC: suggested antigen retrieval with TE buffer pH 9.0; (\*) Alternatively, antigen retrieval may be performed with citrate buffer pH 6.0**

**Positive Controls:**

**WB :** HEK-293 cells, SMMC-7721 cells, HeLa cells, HepG2 cells, COLO 320 cells

**IHC :** human kidney tissue,

**IF/ICC :** HeLa cells,

## Storage

**Storage:**  
Store at -20°C. Stable for one year after shipment.  
**Storage Buffer:**  
PBS with 0.02% sodium azide and 50% glycerol pH 7.3.  
Aliquoting is unnecessary for -20°C storage

\*\*\* 20ul sizes contain 0.1% BSA

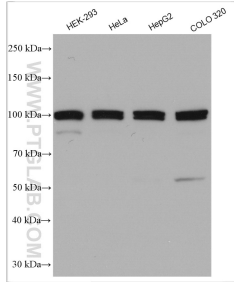
For technical support and original validation data for this product please contact:

T: 1 (888) 4PTGLAB (1-888-478-4522) (toll free in USA), or 1(312) 455-8498 (outside USA)

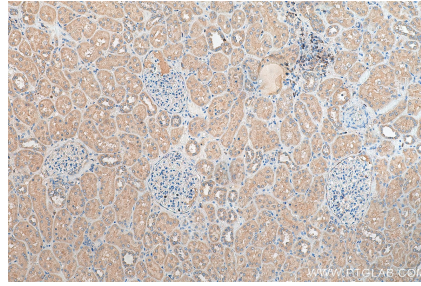
E: [proteintech@ptglab.com](mailto:proteintech@ptglab.com)  
W: [ptglab.com](http://ptglab.com)

This product is exclusively available under Proteintech Group brand and is not available to purchase from any other manufacturer.

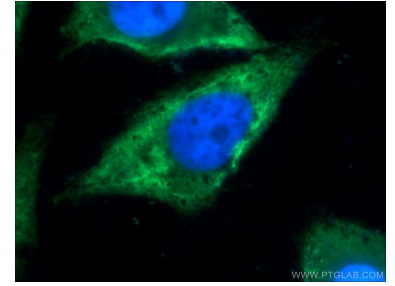
## Selected Validation Data



Various lysates were subjected to SDS PAGE followed by western blot with 21502-1-AP (TXNDC16 antibody) at dilution of 1:1000 incubated at room temperature for 1.5 hours.



Immunohistochemical analysis of paraffin-embedded human kidney tissue slide using 21502-1-AP (TXNDC16 antibody) at dilution of 1:200 (under 10x lens). Heat mediated antigen retrieval with Tris-EDTA buffer (pH 9.0).



Immunofluorescent analysis of HeLa cells using 21502-1-AP (TXNDC16 antibody) at dilution of 1:50 and Alexa Fluor 488-conjugated Goat Anti-Rabbit IgG(H+L).