

For Research Use Only

# KLRF1 Polyclonal antibody

Catalog Number: 21510-1-AP



## Basic Information

**Catalog Number:**

21510-1-AP

**Size:**

150ul , Concentration: 600 ug/ml by Nanodrop and 333 ug/ml by Bradford method using BSA as the standard;

**Source:**

Rabbit

**Isotype:**

IgG

**Immunogen Catalog Number:**

AG16008

**GenBank Accession Number:**

BC098257

**GeneID (NCBI):**

51348

**UNIPROT ID:**

Q9NZS2

**Full Name:**

killer cell lectin-like receptor subfamily F, member 1

**Calculated MW:**

231 aa, 27 kDa

**Observed MW:**

68 kDa

**Purification Method:**

Antigen affinity purification

**Recommended Dilutions:**

WB: 1:500-1:1000

IHC: 1:20-1:200

## Applications

**Tested Applications:**

WB, IHC, ELISA

**Species Specificity:**

human

**Note-IHC: suggested antigen retrieval with TE buffer pH 9.0; (\*) Alternatively, antigen retrieval may be performed with citrate buffer pH 6.0**

**Positive Controls:**

WB : human spleen tissue,

IHC : human tonsillitis tissue,

## Storage

**Storage:**

Store at -20°C. Stable for one year after shipment.

**Storage Buffer:**

PBS with 0.02% sodium azide and 50% glycerol, pH7.3

Aliquoting is unnecessary for -20°C storage

\*\*\* 20ul sizes contain 0.1% BSA

For technical support and original validation data for this product please contact:

T: 1 (888) 4PTGLAB (1-888-478-4522) (toll free in USA), or 1(312) 455-8498 (outside USA)

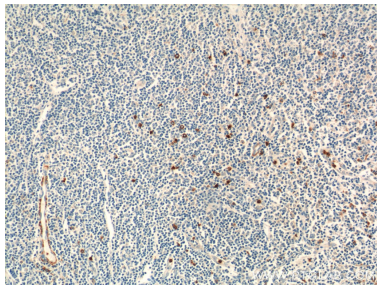
E: [proteintech@ptglab.com](mailto:proteintech@ptglab.com)  
W: [ptglab.com](http://ptglab.com)

This product is exclusively available under Proteintech Group brand and is not available to purchase from any other manufacturer.

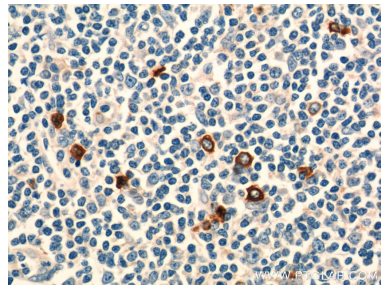
Selected Validation Data



human spleen tissue were subjected to SDS PAGE followed by western blot with 21510-1-AP (KLRF1 antibody) at dilution of 1:500 incubated at room temperature for 1.5 hours.



Immunohistochemical analysis of paraffin-embedded human tonsillitis tissue slide using 21510-1-AP (KLRF1 Antibody) at dilution of 1:50 (under 10x lens).



Immunohistochemical analysis of paraffin-embedded human tonsillitis tissue slide using 21510-1-AP (KLRF1 Antibody) at dilution of 1:50 (under 40x lens).