

For Research Use Only

# CCT4 Polyclonal antibody

Catalog Number: 21524-1-AP

Featured Product

8 Publications



## Basic Information

### Catalog Number:

21524-1-AP

### Size:

150ul, Concentration: 350 ug/ml by Nanodrop and 160 ug/ml by Bradford method using BSA as the standard;

### Source:

Rabbit

### Isotype:

IgG

### Immunogen Catalog Number:

AG16128

### GenBank Accession Number:

BC106934

### GeneID (NCBI):

10575

### UNIPROT ID:

P50991

### Full Name:

chaperonin containing TCP1, subunit 4 (delta)

### Calculated MW:

539 aa, 58 kDa

### Observed MW:

58-60 kDa

### Purification Method:

Antigen affinity purification

### Recommended Dilutions:

WB: 1:1000-1:8000

IHC: 1:20-1:200

## Applications

### Tested Applications:

WB, IHC, ELISA

### Cited Applications:

WB, IHC

### Species Specificity:

human, mouse, rat

### Cited Species:

human, mouse

**Note-IHC: suggested antigen retrieval with TE buffer pH 9.0; (\*) Alternatively, antigen retrieval may be performed with citrate buffer pH 6.0**

### Positive Controls:

WB: MCF-7 cells, mouse heart tissue, HeLa cells

IHC: human liver cancer tissue, human brain tissue

## Notable Publications

Author	Pubmed ID	Journal	Application
Jiarui Fang	36102200	Mol Carcinog	WB
Qiang Luo	33898108	Mol Ther Nucleic Acids	WB
Yu-Cheng Zhang	33475699	J Cell Biol	WB

## Storage

### Storage:

Store at -20°C. Stable for one year after shipment.

### Storage Buffer:

PBS with 0.02% sodium azide and 50% glycerol, pH7.3

Aliquoting is unnecessary for -20°C storage

\*\*\* 20ul sizes contain 0.1% BSA

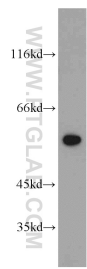
For technical support and original validation data for this product please contact:

T: 1 (888) 4PTGLAB (1-888-478-4522) (toll free in USA), or 1(312) 455-8498 (outside USA)

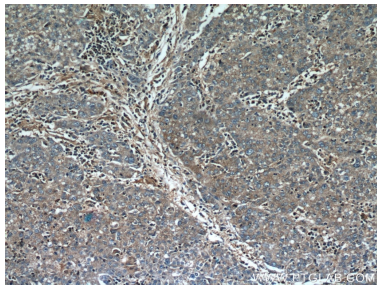
E: [proteintech@ptglab.com](mailto:proteintech@ptglab.com)  
W: [ptglab.com](http://ptglab.com)

This product is exclusively available under Proteintech Group brand and is not available to purchase from any other manufacturer.

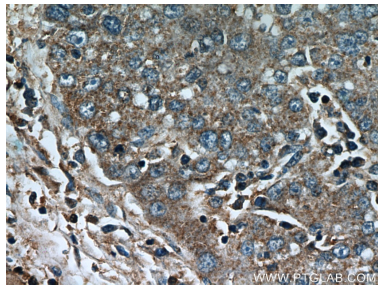
Selected Validation Data



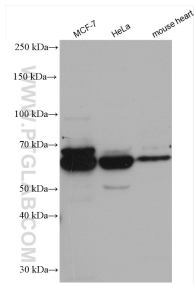
HeLa cells were subjected to SDS PAGE followed by western blot with 21524-1-AP (CCT4 antibody) at dilution of 1:500 incubated at room temperature for 1.5 hours.



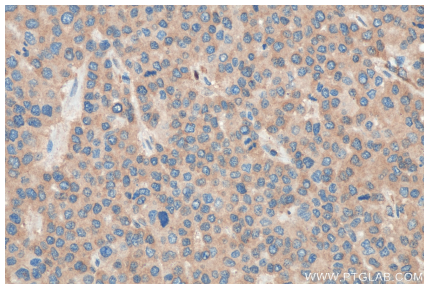
Immunohistochemical analysis of paraffin-embedded human liver cancer using 21524-1-AP (CCT4 antibody) at dilution of 1:50 (under 10x lens).



Immunohistochemical analysis of paraffin-embedded human liver cancer using 21524-1-AP (CCT4 antibody) at dilution of 1:50 (under 40x lens).



Various lysates were subjected to SDS PAGE followed by western blot with 21524-1-AP (CCT4 antibody) at dilution of 1:4000 incubated at room temperature for 1.5 hours.



Immunohistochemical analysis of paraffin-embedded human liver cancer tissue slide using 21524-1-AP (CCT4 antibody) at dilution of 1:200 (under 40x lens). Heat mediated antigen retrieval with Tris-EDTA buffer (pH 9.0).