

For Research Use Only

FHL2 Polyclonal ANTIBODY



Catalog Number: 21619-1-AP **3 Publications**

Basic Information

Catalog Number:

21619-1-AP

Size:

150UL, Concentration: 293 µg/ml by Bradford method using BSA as the standard;

Source:

Rabbit

Isotype:

IgG

Immunogen Catalog Number:

AG1378

GenBank Accession Number:

BC014397

GeneID (NCBI):

2274

Full Name:

four and a half LIM domains 2

Calculated MW:

32 kDa

Observed MW:

32 kDa

Purification Method:

Antigen affinity purification

Recommended Dilutions:

WB 1:1000-1:4000

IP 0.5-4.0 µg for IP and 1:500-1:2000 for WB

IHC 1:50-1:500

IF 1:50-1:500

Applications

Tested Applications:

IF, IHC, IP, WB, ELISA

Cited Applications:

CoIP, IF, WB

Species Specificity:

human, mouse, rat

Cited Species:

human, mouse

Note-IHC: suggested antigen retrieval with TE buffer pH 9.0; (*) Alternatively, antigen retrieval may be performed with citrate buffer pH 6.0

Positive Controls:

WB: mouse ovary tissue, HeLa cells, NIH/3T3 cells

IP: mouse skeletal muscle tissue,

IHC: human heart tissue,

IF: HeLa cells,

Background Information

Notable Publications

Author	Pubmed ID	Journal	Application
Raymond M Johnson	29158429	Infect Immun	WB
Xiaojie Xu	28094252	Nat Commun	WB
Ruiqiong Zhou	32028069	EBioMedicine	WB,IF,CoIP

Storage

Storage:

Store at -20°C. Stable for one year after shipment.

Storage Buffer:

PBS with 0.02% sodium azide and 50% glycerol pH 7.3.

Aliquoting is unnecessary for -20°C storage

For technical support and original validation data for this product please contact:

T: 1 (888) 4PTGLAB (1-888-478-4522) (toll free in USA), or 1(312) 455-8498 (outside USA)

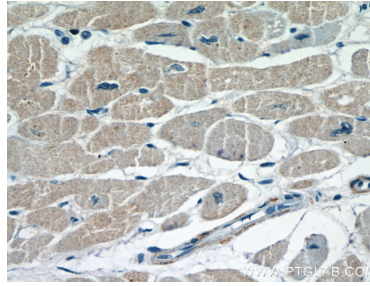
E: proteintech@ptglab.com
W: ptglab.com

This product is exclusively available under Proteintech Group brand and is not available to purchase from any other manufacturer.

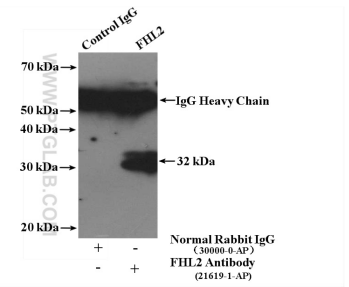
Selected Validation Data



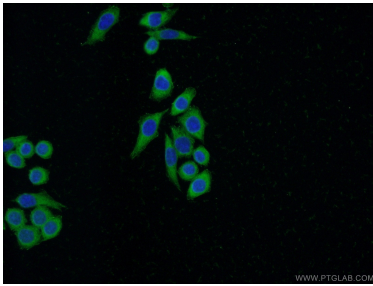
mouse ovary tissue were subjected to SDS PAGE followed by western blot with 21619-1-AP (FHL2 antibody) at dilution of 1:1000 incubated at room temperature for 1.5 hours.



Immunohistochemical analysis of paraffin-embedded human heart using 21619-1-AP (FHL2 antibody) at dilution of 1:100 (under 40x lens).



IP Result of anti-FHL2 (IP:21619-1-AP, 4ug; Detection:21619-1-AP 1:1000) with mouse skeletal muscle tissue lysate 2200ug.



Immunofluorescent analysis of (-20 Ethanol) fixed HeLa cells using 21619-1-AP (FHL2 antibody) at dilution of 1:50 and Alexa Fluor 488-conjugated AffiniPure Goat Anti-Rabbit IgG(H+L).