

For Research Use Only

# Cyclin B2 Polyclonal antibody

Catalog Number: 21644-1-AP

Featured Product

28 Publications



## Basic Information

### Catalog Number:

21644-1-AP

### Size:

150ul, Concentration: 500 ug/ml by Nanodrop and 327 ug/ml by Bradford method using BSA as the standard;

### Source:

Rabbit

### Isotype:

IgG

### Immunogen Catalog Number:

AG16329

### GenBank Accession Number:

BC105086

### GeneID (NCBI):

9133

### UNIPROT ID:

O95067

### Full Name:

cyclin B2

### Calculated MW:

398 aa, 45 kDa

### Observed MW:

51 kDa

### Purification Method:

Antigen affinity purification

### Recommended Dilutions:

WB: 1:2000-1:12000

IP: 0.5-4.0 ug for 1.0-3.0 mg of total protein lysate

IHC: 1:20-1:200

## Applications

### Tested Applications:

WB, IP, IHC, ELISA

### Cited Applications:

WB, IHC, IP

### Species Specificity:

human, mouse, rat

### Cited Species:

human, mouse

### Positive Controls:

WB: A431 cells, DU 145 cells, rat testis tissue, HeLa cells, K-562 cells

IP: A431 cells,

IHC: human cervical cancer tissue, human testis tissue, human colon cancer tissue

**Note-IHC: suggested antigen retrieval with TE buffer pH 9.0; (\*) Alternatively, antigen retrieval may be performed with citrate buffer pH 6.0**

## Background Information

Cyclin B2 (CCNB2) is a member of cyclin family proteins, which regulate the activities of cyclin dependent kinases (CDKs) and different cyclins function spatially and temporally in specific phases of the cell cycle. Cyclin B2 serves a key role in progression of G2/M transition. Cyclin B2 has been found to be up-regulated in a variety of human cancers, such as adrenocortical carcinoma, breast carcinoma, colorectal adenocarcinoma, pituitary adenoma and gastric cancer. The aberrant expression of Cyclin B2 deregulates spindle checkpoints in the cell cycle and results in chromosomal instability (CIN), one of the signature phenotypes of most cancers. Moreover, serum circulating Cyclin B2 mRNA expression has been found increased in cancer patients and associated with cancer stage and metastasis status. Cyclin B2 can be detected double bands (PMID:1651338).

## Notable Publications

Author	Pubmed ID	Journal	Application
Fang Li	36116238	Ecotoxicol Environ Saf	WB
Xiaoyue Zhang	34729106	J Cancer	WB
Zhipeng Qi	34822792	Chem Biol Interact	WB

## Storage

### Storage:

Store at -20°C. Stable for one year after shipment.

### Storage Buffer:

PBS with 0.02% sodium azide and 50% glycerol, pH7.3

Aliquoting is unnecessary for -20°C storage

\*\*\* 20ul sizes contain 0.1% BSA

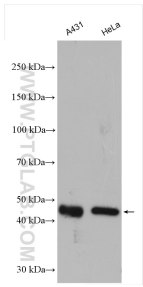
For technical support and original validation data for this product please contact:

T: 1 (888) 4PTGLAB (1-888-478-4522) (toll free in USA), or 1(312) 455-8498 (outside USA)

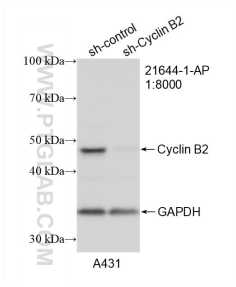
E: [proteintech@ptglab.com](mailto:proteintech@ptglab.com)  
W: [ptglab.com](http://ptglab.com)

This product is exclusively available under Proteintech Group brand and is not available to purchase from any other manufacturer.

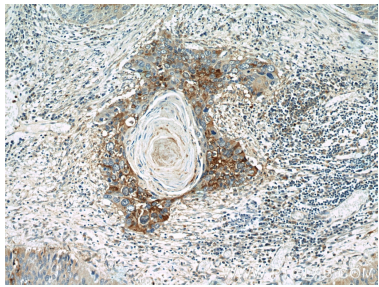
Selected Validation Data



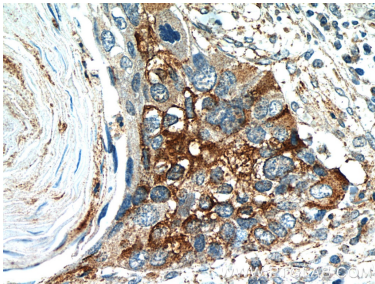
Various lysates were subjected to SDS PAGE followed by western blot with 21644-1-AP (Cyclin B2 antibody) at dilution of 1:6000 incubated at room temperature for 1.5 hours.



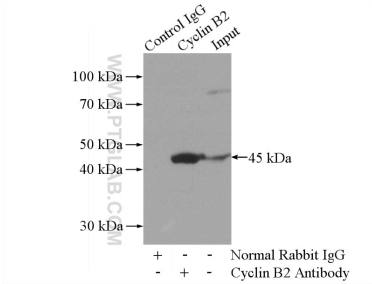
WB result of Cyclin B2 antibody (21644-1-AP; 1:8000; incubated at room temperature for 1.5 hours) with sh-Control and sh-Cyclin B2 transfected A431 cells.



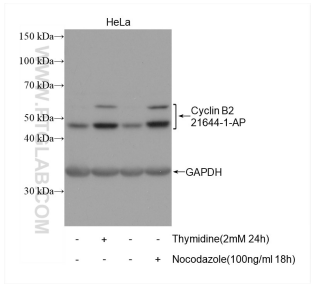
Immunohistochemical analysis of paraffin-embedded human cervical cancer tissue slide using 21644-1-AP (Cyclin B2 antibody at dilution of 1:200 (under 10x lens).



Immunohistochemical analysis of paraffin-embedded human cervical cancer tissue slide using 21644-1-AP (Cyclin B2 antibody at dilution of 1:200 (under 40x lens).



IP result of anti-Cyclin B2 (IP:21644-1-AP, 4ug; Detection:21644-1-AP 1:1000) with A431 cells lysate 2000ug.



Non-treated HeLa and thymidine or nocodazole treated HeLa cells were subjected to SDS PAGE followed by western blot with 21644-1-AP (Cyclin B2 antibody) at dilution of 1:6000 incubated at room temperature for 1.5 hours. The membrane was stripped and re-blotted with GAPDH antibody as loading control.