

For Research Use Only

ROCK2(middle) Polyclonal antibody

Catalog Number: 21645-1-AP

Featured Product

29 Publications



Basic Information

Catalog Number:

21645-1-AP

Size:

150ul, Concentration: 700 ug/ml by Nanodrop and 520 ug/ml by Bradford method using BSA as the standard;

Source:

Rabbit

Isotype:

IgG

Immunogen Catalog Number:

AG16330

GenBank Accession Number:

BC111801

GeneID (NCBI):

9475

UNIPROT ID:

O75116

Full Name:

Rho-associated, coiled-coil containing protein kinase 2

Calculated MW:

77 kDa, 161 kDa

Observed MW:

161 kDa

Purification Method:

Antigen affinity purification

Recommended Dilutions:

WB: 1:1000-1:4000

IP: 0.5-4.0 ug for 1.0-3.0 mg of total protein lysate

IHC: 1:50-1:500

IF/ICC: 1:50-1:500

Applications

Tested Applications:

WB, IHC, IF/ICC, IP, ELISA

Cited Applications:

WB, IHC, IF, IP

Species Specificity:

human, mouse, rat

Cited Species:

human, mouse, rat

Note-IHC: suggested antigen retrieval with TE buffer pH 9.0; (*) Alternatively, antigen retrieval may be performed with citrate buffer pH 6.0

Positive Controls:

WB: HT-1080 cells, mouse brain tissue, HeLa cells, mouse lung tissue, MCF-7 cells, mouse liver tissue, L02 cells

IP: HeLa cells,

IHC: human liver tissue,

IF/ICC: HepG2 cells, Hela cells

Background Information

ROCK2 is a serine/threonine kinase that regulates cytokinesis, smooth muscle contraction, the formation of actin stress fibers and focal adhesions, and the activation of the c-fos serum response element. It is an isozyme of ROCK1, is a target for the small GTPase Rho. ROCK2 is localized in both cytoplasm and nucleus, and the nucleus-localized ROCK2 can target p300 for phosphorylation to regulate its acetyltransferase activity (PMID:16574662).

Notable Publications

Author	Pubmed ID	Journal	Application
Da Huang	25251472	Biochem Biophys Res Commun	WB
K Liu	31610097	Andrology	WB, IHC
Kathryn N Becker	35563863	Cells	WB

Storage

Storage:

Store at -20°C. Stable for one year after shipment.

Storage Buffer:

PBS with 0.02% sodium azide and 50% glycerol, pH7.3

Aliquoting is unnecessary for -20°C storage

*** 20ul sizes contain 0.1% BSA

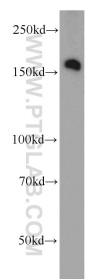
For technical support and original validation data for this product please contact:

T: 1 (888) 4PTGLAB (1-888-478-4522) (toll free in USA), or 1(312) 455-8498 (outside USA)

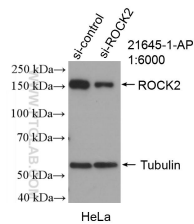
E: proteintech@ptglab.com
W: ptglab.com

This product is exclusively available under Proteintech Group brand and is not available to purchase from any other manufacturer.

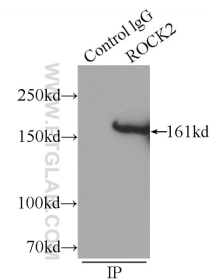
Selected Validation Data



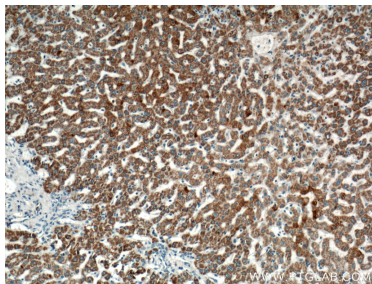
HT-1080 cells were subjected to SDS PAGE followed by western blot with 21645-1-AP (ROCK2(middle) antibody) at dilution of 1:1000 incubated at room temperature for 1.5 hours.



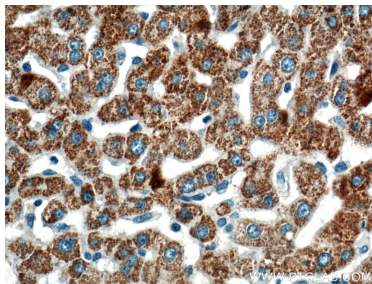
WB result of ROCK2(middle) antibody (21645-1-AP; 1:6000; incubated at room temperature for 1.5 hours) with sh-Control and sh-ROCK2(middle) transfected HeLa cells.



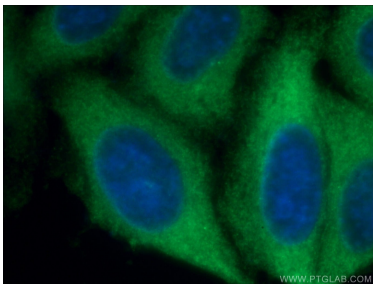
IP result of anti-ROCK2(middle) (IP:21645-1-AP, 5ug; Detection:21645-1-AP 1:700) with HeLa cells lysate 1320ug.



Immunohistochemical analysis of paraffin-embedded human liver tissue slide using 21645-1-AP (ROCK2(middle) antibody at dilution of 1:200 (under 10x lens).



Immunohistochemical analysis of paraffin-embedded human liver tissue slide using 21645-1-AP (ROCK2(middle) antibody at dilution of 1:200 (under 40x lens).



Immunofluorescent analysis of (-20°C Ethanol) fixed HepG2 cells using 21645-1-AP (ROCK2(middle) antibody) at dilution of 1:50 and Alexa Fluor 488-conjugated Goat Anti-Rabbit IgG(H+L).