

For Research Use Only

# UQCRC1 Polyclonal ANTIBODY



Catalog Number: 21705-1-AP

8 Publications

## Basic Information

Catalog Number:  
21705-1-AP

Size:  
22 µg/150 µl

Source:  
Rabbit

Isotype:  
IgG

Purification Method:  
Antigen affinity purification

Immunogen Catalog Number:  
AG16322

GenBank Accession Number:  
BC009586

GeneID (NCBI):  
7384

Full Name:  
ubiquinol-cytochrome c reductase core protein I

Calculated MW:  
480aa, 53 kDa

Observed MW:  
45 kDa

Recommended Dilutions:

WB 1:1000-1:4000

IP 0.5-4.0 µg for IP and 1:500-1:1000 for WB

IHC 1:20-1:200

IF 1:10-1:100

## Applications

Tested Applications:  
IF, IHC, IP, WB, ELISA

Cited Applications:  
WB

Species Specificity:  
human, mouse, rat

Cited Species:  
human, mouse

**Note: suggested antigen retrieval with TE buffer pH 9.0; (\*) Alternatively, antigen retrieval may be performed with citrate buffer pH 6.0**

Positive Controls:

WB : human brain tissue, mouse large intestine tissue, mouse skeletal muscle tissue, HeLa cells, mouse liver tissue, MCF-7 cells, L02 cells, mouse spleen tissue, mouse brain tissue, human skeletal muscle tissue, HepG2 cells, human heart tissue, mouse kidney tissue

IP : HeLa cells;

IHC : human heart tissue; human liver tissue

IF : HepG2 cells;

## Background Information

UQCRC1 (Cytochrome b-c1 complex subunit 1, mitochondrial), also named as QCR1 and UQCRC1, is a subunit of the cytochrome bc1 complex (complex III) of the mitochondrial respiratory chain, may mediate the formation of the complex between cytochromes c and c1. The gene encodes a 53 kDa protein with a 34 amino acids transit peptide. It is associated with apoptosis or inhibition of cancer cell growth.

## Notable Publications

Author	Pubmed ID	Journal	Application
Xiao-Hong Deng	30315253	Acta Pharmacol Sin	WB
Yingyan Han	27239088	Dis Markers	WB
Motoki Fujimaki	31061094	Mol Cell Biol	WB

## Storage

Storage:

Store at -20°C. Stable for one year after shipment.

Storage Buffer:

PBS with 0.02% sodium azide and 50% glycerol pH 7.3.

Aliquoting is unnecessary for -20°C storage

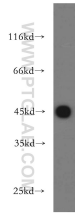
For technical support and original validation data for this product please contact:

T: 1 (888) 4PTGLAB (1-888-478-4522) (toll free in USA), or 1(312) 455-8498 (outside USA)

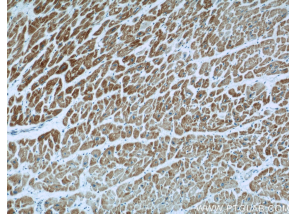
E: [proteintech@ptglab.com](mailto:proteintech@ptglab.com)  
W: [ptglab.com](http://ptglab.com)

This product is exclusively available under Proteintech Group brand and is not available to purchase from any other manufacturer.

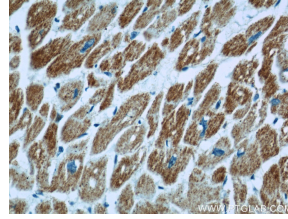
## Selected Validation Data



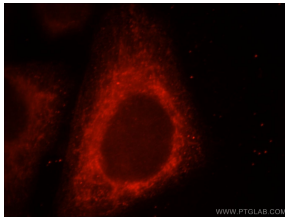
human brain tissue were subjected to SDS PAGE followed by western blot with 21705-1-AP(UQCRC1 antibody) at dilution of 1:500 incubated at room temperature for 1.5 hours



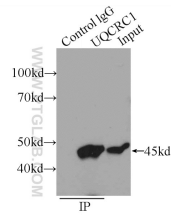
Immunohistochemical analysis of paraffin-embedded human heart using 21705-1-AP(UQCRC1 antibody) at dilution of 1:100 (under 10x lens)



Immunohistochemical analysis of paraffin-embedded human heart using 21705-1-AP(UQCRC1 antibody) at dilution of 1:100 (under 40x lens)



Immunofluorescent analysis of HepG2 cells, using UQCRC1 antibody 21705-1-AP at 1:25 dilution and Rhodamine-labeled goat anti-rabbit IgG (red).



IP Result of anti-UQCRC1 (IP:21705-1-AP, 4ug; Detection:21705-1-AP 1:500) with HeLa cells lysate 1600ug.