

For Research Use Only

# Integrin Beta 4 Polyclonal antibody

Catalog Number: 21738-1-AP

Featured Product

25 Publications



## Basic Information

### Catalog Number:

21738-1-AP

### Size:

150ul, Concentration: 400 ug/ml by Nanodrop;

### Source:

Rabbit

### Isotype:

IgG

### Immunogen Catalog Number:

AG16450

### GenBank Accession Number:

BC126411

### GeneID (NCBI):

3691

### UNIPROT ID:

P16144

### Full Name:

integrin, beta 4

### Calculated MW:

1752 aa, 195 kDa

### Observed MW:

200-240 kDa

### Purification Method:

Antigen affinity purification

### Recommended Dilutions:

WB: 1:500-1:1000

IP: 0.5-4.0 ug for 1.0-3.0 mg of total protein lysate

IHC: 1:300-1:1200

IF/ICC: 1:200-1:800

## Applications

### Tested Applications:

WB, IHC, IF/ICC, IP, ELISA

### Cited Applications:

WB, IHC, IF, IP, CoIP

### Species Specificity:

human, mouse, rat

### Cited Species:

human, mouse, rat

**Note-IHC: suggested antigen retrieval with TE buffer pH 9.0; (\*) Alternatively, antigen retrieval may be performed with citrate buffer pH 6.0**

### Positive Controls:

**WB:** BxPC-3 cells, A431 cells, A549 cells, HT-29 cells, HeLa cells, MCF-7 cells

**IP:** HeLa cells,

**IHC:** mouse colon tissue, human placenta tissue, human pancreas cancer tissue, human breast cancer tissue

**IF/ICC:** A431 cells,

## Background Information

Integrins are cell adhesion receptors that are heterodimers composed of non-covalently associated alpha and beta subunits. Integrin beta-4 is predominantly expressed in squamous epithelial cells, endothelial cells, immature thymocytes, Schwann cells, and fibroblasts of the peripheral nervous system (PMID: 28084395). Integrin beta-4 pairs with alpha-6, and the heterodimeric integrin alpha-6/beta-4 is a receptor for laminin. Integrin alpha-6/beta-4 plays a critical structural role in the hemidesmosome of epithelial cells, and also plays a role in the invasive and metastatic phenotype of various cancers.

## Notable Publications

Author	Pubmed ID	Journal	Application
Yueqi Li	30378153	J Cell Biochem	WB
Hongfei Liu	36293483	Int J Mol Sci	WB,IF
Junya Ning	36203272	Cell Adh Migr	WB

## Storage

### Storage:

Store at -20°C. Stable for one year after shipment.

### Storage Buffer:

PBS with 0.02% sodium azide and 50% glycerol, pH7.3

Aliquoting is unnecessary for -20°C storage

\*\*\* 20ul sizes contain 0.1% BSA

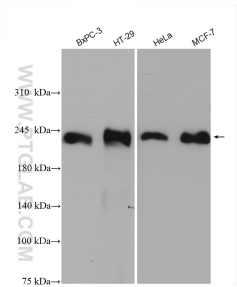
For technical support and original validation data for this product please contact:

T: 1 (888) 4PTGLAB (1-888-478-4522) (toll free in USA), or 1(312) 455-8498 (outside USA)

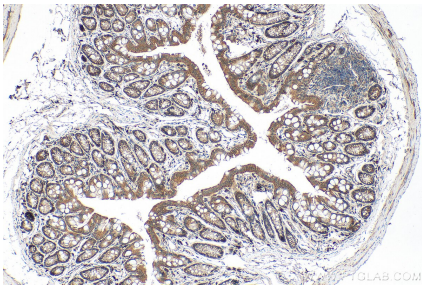
E: [proteintech@ptglab.com](mailto:proteintech@ptglab.com)  
W: [ptglab.com](http://ptglab.com)

This product is exclusively available under Proteintech Group brand and is not available to purchase from any other manufacturer.

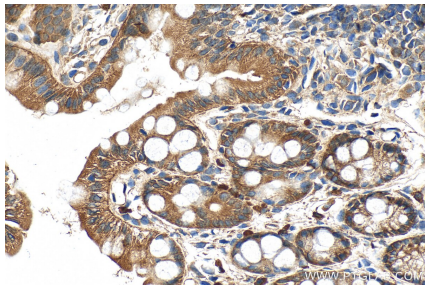
Selected Validation Data



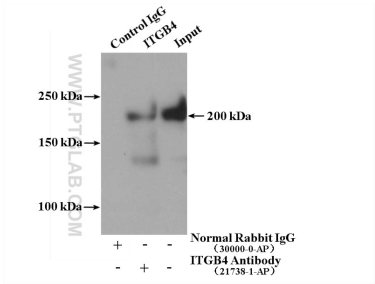
Various lysates were subjected to SDS PAGE followed by western blot with 21738-1-AP (Integrin beta-4 antibody) at dilution of 1:600 incubated at room temperature for 1.5 hours.



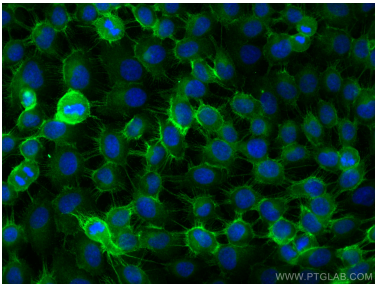
Immunohistochemical analysis of paraffin-embedded mouse colon tissue slide using 21738-1-AP (Integrin Beta 4 antibody) at dilution of 1:600 (under 10x lens). Heat mediated antigen retrieval with Tris-EDTA buffer (pH 9.0).



Immunohistochemical analysis of paraffin-embedded mouse colon tissue slide using 21738-1-AP (Integrin Beta 4 antibody) at dilution of 1:600 (under 40x lens). Heat mediated antigen retrieval with Tris-EDTA buffer (pH 9.0).



IP result of anti-Integrin Beta 4 (IP:21738-1-AP, 4ug; Detection:21738-1-AP 1:500) with HeLa cells lysate 2400ug.



Immunofluorescent analysis of (-20°C Methanol) fixed A431 cells using Integrin Beta 4 antibody (21738-1-AP) at dilution of 1:400 and CoraLite® 488-Conjugated AffiniPure Goat Anti-Rabbit IgG(H+L) (SA00013-2).