

For Research Use Only

EZH2 Polyclonal antibody

Catalog Number: 21800-1-AP

Featured Product

50 Publications



Basic Information

Catalog Number:

21800-1-AP

Size:

150ul, Concentration: 800 µg/ml by Nanodrop and 367 µg/ml by Bradford method using BSA as the standard;

Source:

Rabbit

Isotype:

IgG

Immunogen Catalog Number:

AG16789

GenBank Accession Number:

BC010858

GeneID (NCBI):

2146

Full Name:

enhancer of zeste homolog 2 (Drosophila)

Calculated MW:

751 aa, 86 kDa

Observed MW:

90-102 kDa

Purification Method:

Antigen affinity purification

Recommended Dilutions:

WB 1:1000-1:5000

IP 0.5-4.0 ug for IP and 1:500-1:2000 for WB

IF 1:20-1:200

Applications

Tested Applications:

FC, IF, IP, WB, ELISA

Cited Applications:

CHIP, IF, WB

Species Specificity:

human, mouse, rat

Cited Species:

human, mouse, pig, rat

Positive Controls:

WB : DU 145 cells, A431 cells, HEK-293 cells, HepG2 cells, Jurkat cells, mouse kidney tissue, NIH/3T3 cells, Raji cells, rat kidney tissue

IP : HepG2 cells,

IF : HepG2 cells,

Background Information

EZH2 (enhancer of zeste homologue 2, also known as KMT6) is a member of Polycomb group (PcG) family and encodes a histone methyl transferase that has an essential role in promoting histone H3 lysine 27 trimethylation (H3K27me3) and epigenetic gene silencing. EZH2 is important for cell proliferation and inhibition of cell differentiation, and is implicated in cancer progression. Overexpression of EZH2 is a marker of advanced and metastatic disease in many solid tumors, including prostate and breast cancer. This antibody detected EZH2 protein as a single band with a molecular weight (MW) of 91-100 kDa in multiple cell lines. The phosphorylation may result in the higher molecular weight (calculated MW as 80-86 kDa). (20935635, 21367748)

Notable Publications

Author	Pubmed ID	Journal	Application
Min Li	28970250	FASEB J	WB
Yan Sun	34564701	Cell Death Dis	WB
Limei Ji	34455779	J Med Chem	WB

Storage

Storage:

Store at -20°C. Stable for one year after shipment.

Storage Buffer:

PBS with 0.02% sodium azide and 50% glycerol pH 7.3.

Aliquoting is unnecessary for -20°C storage

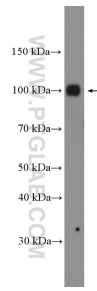
For technical support and original validation data for this product please contact:

T: 1 (888) 4PTGLAB (1-888-478-4522) (toll free in USA), or 1(312) 455-8498 (outside USA)

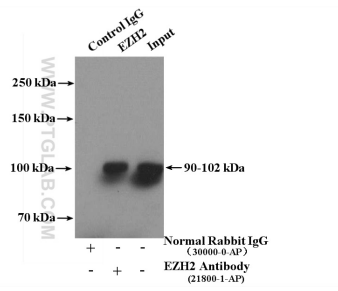
E: proteintech@ptglab.com
W: ptglab.com

This product is exclusively available under Proteintech Group brand and is not available to purchase from any other manufacturer.

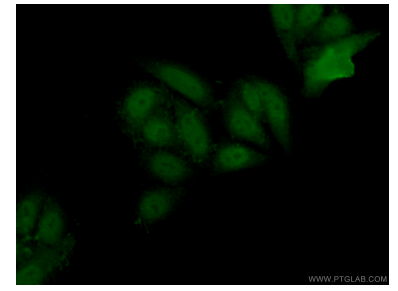
Selected Validation Data



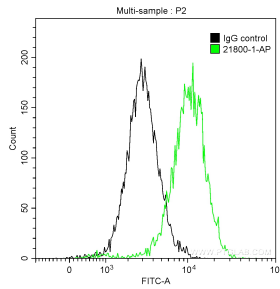
DU 145 cells were subjected to SDS PAGE followed by western blot with 21800-1-AP (EZH2 Antibody) at dilution of 1:4000 incubated at room temperature for 1.5 hours.



IP Result of anti-EZH2 (IP:21800-1-AP, 4ug; Detection:21800-1-AP 1:1000) with HepG2 cells lysate 3400ug.



Immunofluorescent analysis of (10% Formaldehyde) fixed HepG2 cells using 21800-1-AP (EZH2 antibody) at dilution of 1:50 and Alexa Fluor 488-conjugated AffiniPure Goat Anti-Rabbit IgG(H+L).



1X10⁶ HepG2 cells were intracellularly stained with 0.2 ug Anti-Human EZH2 (21800-1-AP) and CoraLite@488-Conjugated AffiniPure Goat Anti-Rabbit IgG(H+L) at dilution 1:1000 (green), and 0.2 ug Control Antibody. Cells were fixed with 4% PFA and permeabilized with 0.1% TritonX-100.