

For Research Use Only

SOAT2 Polyclonal antibody

Catalog Number: 21852-1-AP **1 Publications**



Basic Information

Catalog Number: 21852-1-AP	GenBank Accession Number: BC096090	Purification Method: Antigen affinity purification
Size: 150ul , Concentration: 700 µg/ml by Nanodrop and 440 µg/ml by Bradford method using BSA as the standard;	GeneID (NCBI): 8435	Recommended Dilutions: WB 1:500-1:2000 IHC 1:50-1:500 IF 1:50-1:500
Source: Rabbit	Full Name: sterol O-acyltransferase 2	
Isotype: IgG	Calculated MW: 522 aa, 60 kDa	
Immunogen Catalog Number: AG16364	Observed MW: 46 kDa	

Applications

Tested Applications: IF, IHC, WB, ELISA	Positive Controls: WB : HeLa cells, L02 cells
Cited Applications: IHC	IHC : human liver tissue, human small intestine tissue
Species Specificity: human	IF : HeLa cells,
Cited Species: human	

Note-IHC: suggested antigen retrieval with TE buffer pH 9.0; (*) Alternatively, antigen retrieval may be performed with citrate buffer pH 6.0

Background Information

SOAT2, also named as ACAT2, belongs to the membrane-bound acyltransferase family and Sterol o-acyltransferase subfamily. SOAT2 is expressed preferentially in enterocytes of the intestine and hepatocytes of the liver. The role of SOAT2 in generating esterified cholesterol (EC) that is incorporated directly into atherogenic lipoproteins has made it an attractive target in dyslipidemia management and prevention. (PMID: 29246491)

Notable Publications

Author	Pubmed ID	Journal	Application
Huanji Xu	33637695	Cell Death Discov	IHC

Storage

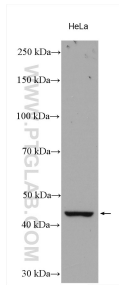
Storage:
Store at -20°C. Stable for one year after shipment.
Storage Buffer:
PBS with 0.02% sodium azide and 50% glycerol pH 7.3.
Aliquoting is unnecessary for -20°C storage

***** 20ul sizes contain 0.1% BSA**

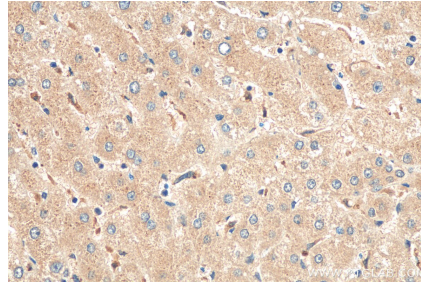
For technical support and original validation data for this product please contact:
T: 1 (888) 4PTGLAB (1-888-478-4522) (toll free in USA), or 1(312) 455-8498 (outside USA)
E: proteintech@ptglab.com
W: ptglab.com

This product is exclusively available under Proteintech Group brand and is not available to purchase from any other manufacturer.

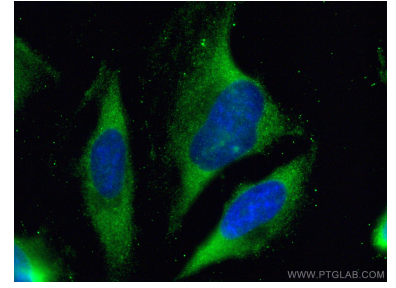
Selected Validation Data



HeLa cells were subjected to SDS PAGE followed by western blot with 21852-1-AP (SOAT2 antibody) at dilution of 1:1000 incubated at room temperature for 1.5 hours.



Immunohistochemical analysis of paraffin-embedded human liver tissue slide using 21852-1-AP (SOAT2 antibody) at dilution of 1:200 (under 40x lens). Heat mediated antigen retrieval with Tris-EDTA buffer (pH 9.0).



Immunofluorescent analysis of (-20°C Ethanol) fixed HeLa cells using SOAT2 antibody (21852-1-AP) at dilution of 1:200 and CoraLite®488-Conjugated AffiniPure Goat Anti-Rabbit IgG(H+L).