

For Research Use Only

NR3C2 Polyclonal antibody

Catalog Number: 21854-1-AP

11 Publications



Basic Information

Catalog Number: 21854-1-AP	GenBank Accession Number: BC111758	Purification Method: Antigen affinity purification
Size: 150ul, Concentration: 1000 µg/ml by Nanodrop and 533 µg/ml by Bradford method using BSA as the standard;	GeneID (NCBI): 4306	Recommended Dilutions: WB 1:500-1:2000 IP 0.5-4.0 ug for IP and 1:500-1:1000 for WB
Source: Rabbit	Full Name: nuclear receptor subfamily 3, group C, member 2	IHC 1:20-1:200 IF 1:10-1:100
Isotype: IgG	Calculated MW: 984 aa, 107 kDa	
Immunogen Catalog Number: AG16410	Observed MW: 94-100 kDa	

Applications

Tested Applications:

IF, IHC, IP, WB, ELISA

Cited Applications:

chIP, IF, IHC, WB

Species Specificity:

human, mouse, rat

Cited Species:

human, mouse, rat

Note-IHC: suggested antigen retrieval with TE buffer pH 9.0; (*) Alternatively, antigen retrieval may be performed with citrate buffer pH 6.0

Positive Controls:

WB : HEK-293 cells, HeLa cells

IP : HEK-293 cells,

IHC : human kidney tissue, human colon tissue, human skin tissue

IF : HepG2 cells,

Background Information

Nuclear receptor subfamily 3 group C member 2 (NR3C2), also known as Mineralocorticoid receptor (MCR or MR), is a member of the steroid/thyroid / retinoic nuclear hormone receptor superfamily that has been shown to activate gene transcription in response to aldosterone binding. Regulation of the mineralocorticoid receptors occurs through either receptor down-regulation (negative autoregulation) or hormone-mediated upregulation (positive autoregulation). MCR association with HSP 90 appears to be required for hormone binding to MCR and subsequent MCR activation. This antibody is a rabbit polyclonal antibody, specifically reacts with the 107kd MCR protein.

Notable Publications

Author	Pubmed ID	Journal	Application
Shuai Lian	30423388	Behav Brain Res	WB
Lisa T C M van Weert	31121060	J Neuroendocrinol	chIP
Liju Luo	32222724	Med Sci Monit	WB

Storage

Storage:

Store at -20°C. Stable for one year after shipment.

Storage Buffer:

PBS with 0.02% sodium azide and 50% glycerol pH 7.3.

Aliquoting is unnecessary for -20°C storage

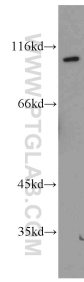
For technical support and original validation data for this product please contact:

T: 1 (888) 4PTGLAB (1-888-478-4522) (toll free in USA), or 1(312) 455-8498 (outside USA)

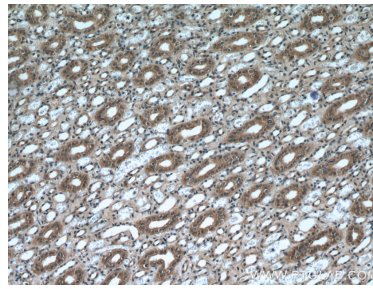
E: proteintech@ptglab.com
W: ptglab.com

This product is exclusively available under Proteintech Group brand and is not available to purchase from any other manufacturer.

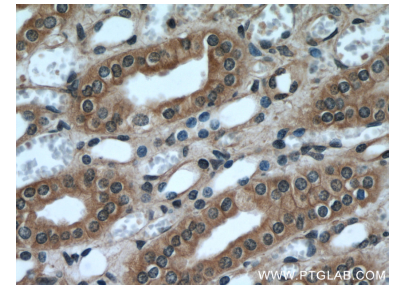
Selected Validation Data



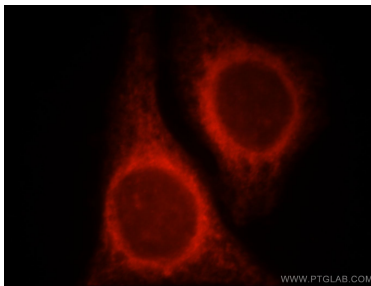
HEK-293 cells were subjected to SDS PAGE followed by western blot with 21854-1-AP (NR3C2 antibody) at dilution of 1:1000 incubated at room temperature for 1.5 hours.



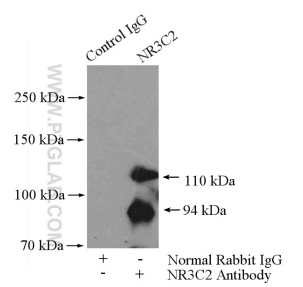
Immunohistochemical analysis of paraffin-embedded human kidney using 21854-1-AP (NR3C2 antibody) at dilution of 1:50 (under 10x lens).



Immunohistochemical analysis of paraffin-embedded human kidney using 21854-1-AP (NR3C2 antibody) at dilution of 1:50 (under 40x lens).



Immunofluorescent analysis of HepG2 cells, using NR3C2 antibody 21854-1-AP at 1:25 dilution and Rhodamine-labeled goat anti-rabbit IgG (red).



IP Result of anti-NR3C2 (IP:21854-1-AP, 4ug; Detection:21854-1-AP 1:500) with HEK-293 cells lysate 3200ug.