

Annexin A1 Polyclonal ANTIBODY

Catalog Number: 21990-1-AP

Featured Product

8 Publications

Basic Information

Catalog Number:
21990-1-AP

Size:
43 µg/150 µl

Source:
Rabbit

Isotype:
IgG

Purification Method:
Antigen affinity purification

Immunogen Catalog Number:
AG17273

GenBank Accession Number:
BC001275

GeneID (NCBI):
301

Full Name:
annexin A1

Calculated MW:
346aa, 39 kDa

Observed MW:
37 kDa

Recommended Dilutions:

WB 1:1000-1:4000

IP 0.5-4.0 µg for IP and 1:1000-1:4000 for WB

IHC 1:50-1:500

IF 1:20-1:200

Applications

Tested Applications:
IF, IHC, IP, WB, ELISA

Cited Applications:
IF, IHC, IP, WB

Species Specificity:
human, mouse, rat

Cited Species:
human, mouse, rat

**Note-IHC: suggested antigen retrieval with
TE buffer pH 9.0; (*) Alternatively, antigen
retrieval may be performed with citrate
buffer pH 6.0**

Positive Controls:

WB : PC-3 cells; multi-cells

IP : HeLa cells;

IHC : human oesophagus tissue; human lung tissue,
human ovary tumor tissue, human kidney tissue,
human small intestine tissue

IF : A431 cells;

Background Information

ANXA1, also named as ANX1, LPC1 and p35, belongs to the annexin family. It is a member of the annexin family of Ca²⁺-binding and phospholipidbinding proteins, and it is particularly abundant in various populations of peripheral blood leukocytes. ANXA1 regulates phospholipase A2 activity. It seems to bind from two to four calcium ions with high affinity. ANXA1 is a pleiotropic protein produced by many cell types including peripheral blood leukocytes.

Notable Publications

Author	Pubmed ID	Journal	Application
Chuming Jia	30292410	Biochem Biophys Res Commun	WB, IHC
Yu Lin	31215738	Mol Reprod Dev	WB
Yao Ge	30623413	J Cell Physiol	WB, IF, IP

Storage

Storage:

Store at -20°C. Stable for one year after shipment.

Storage Buffer:

PBS with 0.02% sodium azide and 50% glycerol pH 7.3.

Aliquoting is unnecessary for -20°C storage

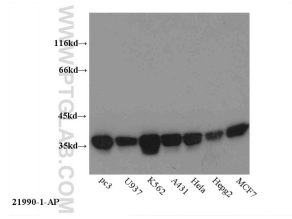
For technical support and original validation data for this product please contact:

T: 1 (888) 4PTGLAB (1-888-478-4522) (toll free in USA), or 1(312) 455-8498 (outside USA)

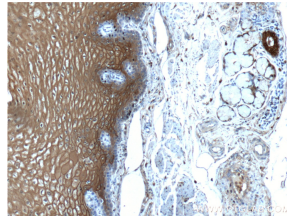
E: proteintech@ptglab.com
W: ptglab.com

This product is exclusively available under Proteintech Group brand and is not available to purchase from any other manufacturer.

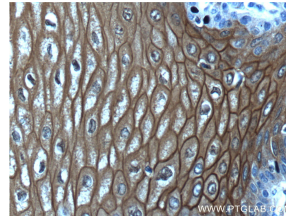
Selected Validation Data



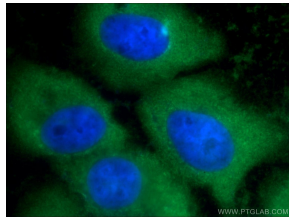
WB result of 21990-1-AP(Annexin A1 antibody).



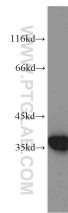
Immunohistochemical analysis of paraffin-embedded human esophagus tissue slide using 21990-1-AP Annexin A1 antibody at dilution of 1:200 (under 10x lens).



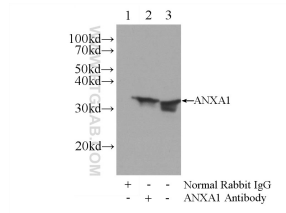
Immunohistochemical analysis of paraffin-embedded human esophagus tissue slide using 21990-1-AP Annexin A1 antibody at dilution of 1:200 (under 40x lens).



Immunofluorescent analysis of A431 cells using 21990-1-AP Annexin A1 antibody at dilution of 1:100 and Alexa Fluor 488-conjugated AffiniPure Goat Anti-Rabbit IgG(H+L)



PC-3 cells were subjected to SDS PAGE followed by western blot with 21990-1-AP(Annexin A1 antibody) at dilution of 1:2000 incubated at room temperature for 1.5 hours



IP Result of anti-Annexin A1 (IP:21990-1-AP, 3ug; Detection:21990-1-AP 1:2000) with HeLa cells lysate 2400ug.