

For Research Use Only

CD107a / LAMP1 Polyclonal antibody

Catalog Number: 21997-1-AP

140 Publications



Basic Information

Catalog Number:

21997-1-AP

Size:

150ul, Concentration: 800 ug/ml by Nanodrop;

Source:

Rabbit

Isotype:

IgG

Immunogen Catalog Number:

AG17367

GenBank Accession Number:

BC021288

GeneID (NCBI):

3916

ENSEMBL Gene ID:

ENSG00000185896

UNIPROT ID:

P11279

Full Name:

lysosomal-associated membrane protein 1

Calculated MW:

45 kDa

Observed MW:

90-120 kDa

Purification Method:

Antigen affinity purification

Recommended Dilutions:

WB 1:1000-1:8000

IHC 1:50-1:500

IF-P 1:50-1:500

Applications

Tested Applications:

WB, IHC, IF-P, ELISA

Cited Applications:

WB, IHC, IP, ColP

Species Specificity:

human

Cited Species:

human, pig, monkey, zebrafish, bovine, turtle

Note-IHC: suggested antigen retrieval with TE buffer pH 9.0; (*) Alternatively, antigen retrieval may be performed with citrate buffer pH 6.0

Positive Controls:

WB : HepG2 cells, U937 cells

IHC : human liver cancer tissue, human placenta tissue, human gliomas tissue, human pancreas tissue

IF-P : human ovary tumor tissue,

Background Information

LAMP1 (also known as CD107a) is a 90-120 kDa heavily glycosylated membrane protein enriched in the lysosomal membrane. LAMP1 functions to provide selectins with carbohydrate ligands. This protein has also been shown to be a marker of degranulation on lymphocytes such as CD8+ and NK cells and may also play a role in tumor cell differentiation and metastasis.

Notable Publications

Author	Pubmed ID	Journal	Application
Wei Cai	36170234	Autophagy	
Yong Fan	34560177	Food Chem Toxicol	WB
Jie Liu	36096243	Life Sci	WB

Storage

Storage:

Store at -20°C. Stable for one year after shipment.

Storage Buffer:

PBS with 0.02% sodium azide and 50% glycerol, pH7.3

Aliquoting is unnecessary for -20°C storage

*** 20ul sizes contain 0.1% BSA

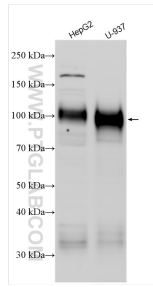
For technical support and original validation data for this product please contact:

T: 1 (888) 4PTGLAB (1-888-478-4522) (toll free in USA), or 1(312) 455-8498 (outside USA)

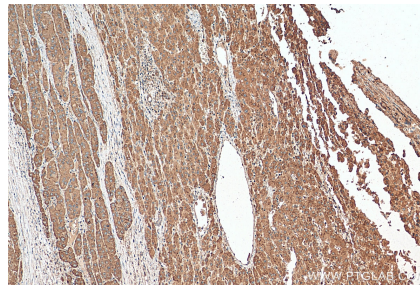
E: proteintech@ptglab.com
W: ptglab.com

This product is exclusively available under Proteintech Group brand and is not available to purchase from any other manufacturer.

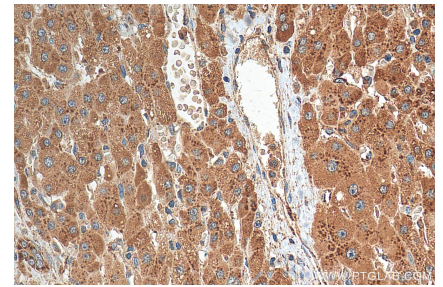
Selected Validation Data



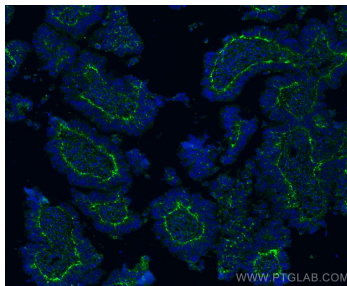
Various lysates were subjected to SDS PAGE followed by western blot with 21997-1-AP (CD107a / LAMP1 antibody) at dilution of 1:4000 incubated at room temperature for 1.5 hours.



Immunohistochemical analysis of paraffin-embedded human liver cancer tissue slide using 21997-1-AP (LAMP1 antibody) at dilution of 1:200 (under 10x lens). Heat mediated antigen retrieval with Tris-EDTA buffer (pH 9.0).



Immunohistochemical analysis of paraffin-embedded human liver cancer tissue slide using 21997-1-AP (LAMP1 antibody) at dilution of 1:200 (under 40x lens). Heat mediated antigen retrieval with Tris-EDTA buffer (pH 9.0).



Immunofluorescent analysis of (4% PFA) fixed paraffin-embedded human ovary tumor tissue using CD107a / LAMP1 antibody (21997-1-AP) at dilution of 1:200 and Coralite® 488-Conjugated Goat Anti-Rabbit IgG(H+L) (SA00013-2). Heat mediated antigen retrieval with Tris-EDTA buffer (pH 9.0).