

For Research Use Only

# PDE6B Polyclonal antibody

Catalog Number: 22063-1-AP **5 Publications**



## Basic Information

**Catalog Number:**

22063-1-AP

**Size:**

150ul , Concentration: 420 µg/ml by Bradford method using BSA as the standard;

**Source:**

Rabbit

**Isotype:**

IgG

**Immunogen Catalog Number:**

AG17139

**GenBank Accession Number:**

BC000249

**GeneID (NCBI):**

5158

**Full Name:**

phosphodiesterase 6B, cGMP-specific, rod, beta

**Calculated MW:**

854 aa, 98 kDa

**Observed MW:**

98 kDa

**Purification Method:**

Antigen affinity purification

**Recommended Dilutions:**

WB 1:500-1:2000

IP 0.5-4.0 ug for IP and 1:500-1:2000

for WB

IF 1:50-1:500

## Applications

**Tested Applications:**

IF, IP, WB, ELISA

**Cited Applications:**

IF, IHC, WB

**Species Specificity:**

human, mouse, rat

**Cited Species:**

mouse, zebrafish

**Positive Controls:**

**WB:** mouse eye tissue, A549 cells, rat eye tissue

**IP:** Y79 cells,

**IF:** mouse eye tissue,

## Background Information

PDE6 is a cGMP-specific PDE family and presents multicomponent enzyme complexes. The rod PDE6 enzyme is comprised of two catalytic subunits (PDE6A and PDE6B) and it is expressed in human lungs (PMID:20979602). PDE6B (Rod cGMP-specific 3',5'-cyclic phosphodiesterase subunit beta) is also named as PDEB and belongs to the cyclic nucleotide phosphodiesterase family. PDE6B also has a C-terminal CAAX motif for posttranslational processing involving lipidation, proteolysis, and carboxymethylation (PMID:8394243). Defects in PDE6B are the cause of retinitis pigmentosa type 40 (RP40) (PMID:22334370) and congenital stationary night blindness autosomal dominant type 2 (CSNBAD2) (PMID:8075643).

## Notable Publications

Author	Pubmed ID	Journal	Application
Poppy Datta	31694913	J Biol Chem	WB, IF
Poppy Datta	33961633	PLoS One	WB, IHC
Poppy Datta	26216965	Proc Natl Acad Sci U S A	WB, IF

## Storage

**Storage:**

Store at -20°C. Stable for one year after shipment.

**Storage Buffer:**

PBS with 0.02% sodium azide and 50% glycerol pH 7.3.

Aliquoting is unnecessary for -20°C storage

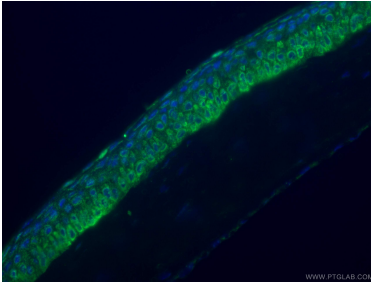
For technical support and original validation data for this product please contact:

T: 1 (888) 4PTGLAB (1-888-478-4522) (toll free in USA), or 1(312) 455-8498 (outside USA)

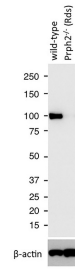
E: [proteintech@ptglab.com](mailto:proteintech@ptglab.com)  
W: [ptglab.com](http://ptglab.com)

**This product is exclusively available under Proteintech Group brand and is not available to purchase from any other manufacturer.**

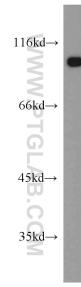
## Selected Validation Data



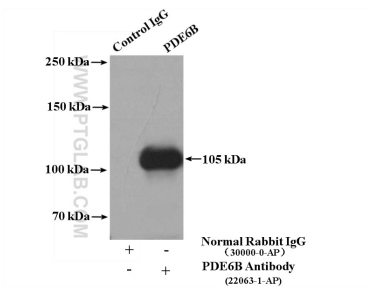
Immunofluorescent analysis of (4% PFA) fixed mouse eye tissue using PDE6B antibody (22063-1-AP) at dilution of 1:100 and CoraLite®488-Conjugated AffiniPure Goat Anti-Rabbit IgG(H+L).



WB results of PDE6B antibody (22063-1-AP) with WT mouse Eye and Prph2 (Rds) mutant mouse Eye (Negative control). Courtesy of Seongjin Seo, PhD, University of Iowa College of Medicine.



mouse eye tissue were subjected to SDS PAGE followed by western blot with 22063-1-AP (PDE6B antibody) at dilution of 1:1000 incubated at room temperature for 1.5 hours.



IP Result of anti-PDE6B (IP:22063-1-AP, 4ug; Detection:22063-1-AP 1:1000) with Y79 cells lysate 2000ug.