

For Research Use Only

LY6E Polyclonal antibody

Catalog Number: 22144-1-AP

Featured Product

1 Publications



Basic Information

Catalog Number:

22144-1-AP

Size:

150UL, Concentration: 313 µg/ml by Bradford method using BSA as the standard;

Source:

Rabbit

Isotype:

IgG

Immunogen Catalog Number:

AG17573

GenBank Accession Number:

BC119708

GeneID (NCBI):

4061

Full Name:

lymphocyte antigen 6 complex, locus E

Calculated MW:

131 aa, 14 kDa

Observed MW:

12-16 kDa

Purification Method:

Antigen affinity purification

Recommended Dilutions:

WB 1:200-1:1000

IHC 1:20-1:200

Applications

Tested Applications:

IHC, WB, ELISA

Cited Applications:

WB

Species Specificity:

human, Mouse

Cited Species:

human

Note-IHC: suggested antigen retrieval with TE buffer pH 9.0; (*) Alternatively, antigen retrieval may be performed with citrate buffer pH 6.0

Positive Controls:

WB: mouse kidney tissue,

IHC: human tonsillitis tissue, human liver cancer tissue

Background Information

The predicted MW of LY6E is 13 kDa. Catalog#22144-1-AP recognises two band of 13 kDa and 18 kDa, and the additional 18 kDa band may be due to glycosylation.

Notable Publications

| Author | Pubmed ID | Journal | Application |
|-------------|-----------|---------|-------------|
| Xuesen Zhao | 32641482 | J Virol | WB |

Storage

Storage:

Store at -20°C. Stable for one year after shipment.

Storage Buffer:

PBS with 0.02% sodium azide and 50% glycerol pH 7.3.

Aliquoting is unnecessary for -20°C storage

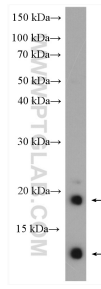
For technical support and original validation data for this product please contact:

T: 1 (888) 4PTGLAB (1-888-478-4522) (toll free in USA), or 1(312) 455-8498 (outside USA)

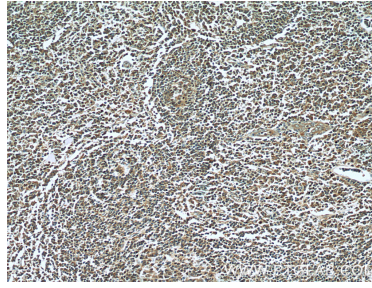
E: proteintech@ptglab.com
W: ptglab.com

This product is exclusively available under Proteintech Group brand and is not available to purchase from any other manufacturer.

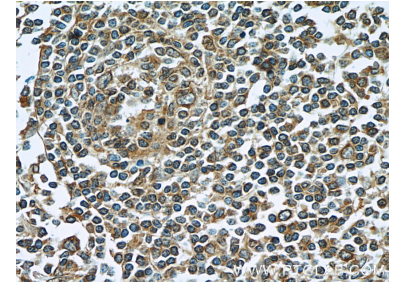
Selected Validation Data



mouse kidney tissue were subjected to SDS PAGE followed by western blot with 22144-1-AP (LY6E antibody) at dilution of 1:300 incubated at room temperature for 1.5 hours.



Immunohistochemical analysis of paraffin-embedded human tonsillitis tissue slide using 22144-1-AP (LY6E Antibody) at dilution of 1:50 (under 10x lens).



Immunohistochemical analysis of paraffin-embedded human tonsillitis tissue slide using 22144-1-AP (LY6E Antibody) at dilution of 1:50 (under 40x lens).