

For Research Use Only

YY1 Polyclonal antibody

Catalog Number: 22156-1-AP

Featured Product

41 Publications



Basic Information

Catalog Number:

22156-1-AP

Size:

150ul, Concentration: 500 ug/ml by Nanodrop and 300 ug/ml by Bradford method using BSA as the standard;

Source:

Rabbit

Isotype:

IgG

Immunogen Catalog Number:

AG17792

GenBank Accession Number:

BC037308

GeneID (NCBI):

7528

UNIPROT ID:

P25490

Full Name:

YY1 transcription factor

Calculated MW:

414 aa, 45 kDa

Observed MW:

65-70 kDa

Purification Method:

Antigen affinity purification

Recommended Dilutions:

WB: 1:500-1:2000

IP: 0.5-4.0 ug for 1.0-3.0 mg of total protein lysate

IHC: 1:50-1:500

IF/ICC: 1:50-1:500

Applications

Tested Applications:

WB, IHC, IF/ICC, IP, ELISA

Cited Applications:

WB, IHC, IF, IP, CoIP, ChIP

Species Specificity:

human, mouse

Cited Species:

human, mouse, rat, pig, bovine

Note-IHC: suggested antigen retrieval with TE buffer pH 9.0; (*) Alternatively, antigen retrieval may be performed with citrate buffer pH 6.0

Positive Controls:

WB: Jurkat cells, HeLa cells, A549 cells, HEK-293 cells

IP: HeLa cells,

IHC: human breast cancer tissue,

IF/ICC: HepG2 cells,

Background Information

YY1, also named as DELTA, INO80S and NF-E1, contains four C2H2-type zinc fingers and belongs to the YY transcription factor family. YY1 is a multifunctional transcription factor that exhibits positive and negative control on a large number of cellular and viral genes by binding to sites overlapping the transcription start site. YY1 may direct histone deacetylases and histone acetyltransferases to a promoter in order to activate or repress the promoter, thus implicating histone modification in the YY1. The open reading frame of the human YY1 cDNA encodes a protein of 414 amino acids with a predicted molecular weight of 44 kDa. However, YY1 migrates on SDS gels as a 65-68 kDa protein, probably due to the structure of the protein. It is a ubiquitously expressed transcription factor with fundamental roles in embryogenesis, differentiation, replication and proliferation. This is a rabbit polyclonal antibody raised against full length YY1 of human origin.

Notable Publications

Author	Pubmed ID	Journal	Application
Trevor Teafatiller	36096242	Life Sci	WB
Qing-Dong Wang	36285444	Pathol Int	WB, CoIP
Huaxing Zhao	36296422	Molecules	WB, IF

Storage

Storage:

Store at -20°C. Stable for one year after shipment.

Storage Buffer:

PBS with 0.02% sodium azide and 50% glycerol, pH7.3

Aliquoting is unnecessary for -20°C storage

*** 20ul sizes contain 0.1% BSA

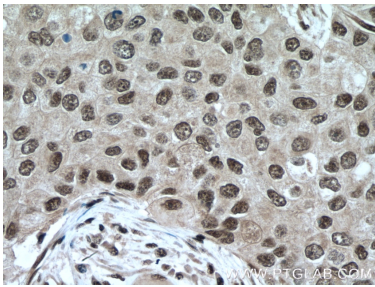
For technical support and original validation data for this product please contact:

T: 1 (888) 4PTGLAB (1-888-478-4522) (toll free in USA), or 1(312) 455-8498 (outside USA)

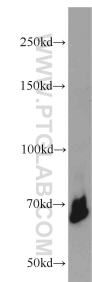
E: proteintech@ptglab.com
W: ptglab.com

This product is exclusively available under Proteintech Group brand and is not available to purchase from any other manufacturer.

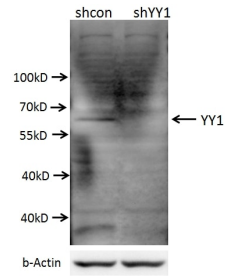
Selected Validation Data



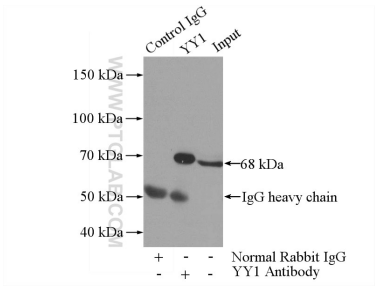
Immunohistochemical analysis of paraffin-embedded human breast cancer tissue slide using 22156-1-AP (YY1 antibody) at dilution of 1:200 (under 40x lens. Heat mediated antigen retrieval with Tris-EDTA buffer (pH 9.0).



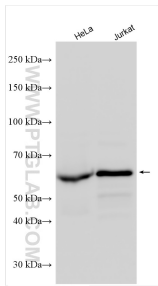
Jurkat cells were subjected to SDS PAGE followed by western blot with 22156-1-AP (YY1 antibody) at dilution of 1:1000 incubated at room temperature for 1.5 hours.



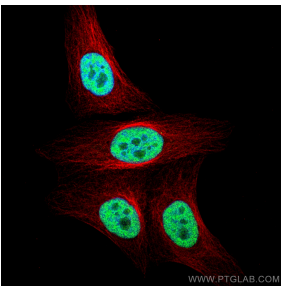
A549 cells (shcontrol and shRNA of YY1) were subjected to SDS PAGE followed by western blot with 22156-1-AP (YY1 antibody) at dilution of 1:1000.



IP result of anti-YY1 (IP:22156-1-AP, 5ug; Detection:22156-1-AP 1:700) with HeLa cells lysate 880ug.



Various lysates were subjected to SDS PAGE followed by western blot with 22156-1-AP (YY1 antibody) at dilution of 1:6000 incubated at room temperature for 1.5 hours.



Immunofluorescent analysis of (4% PFA) fixed HepG2 cells using YY1 antibody (22156-1-AP) at dilution of 1:200 and Multi-rAb CoraLite ® Plus 488-Goat Anti-Rabbit Recombinant Secondary Antibody (H+L) (RGAR002), Alpha Tubulin antibody (66031-1-Ig, Clone: 1E4C11, red).