

For Research Use Only

EXPH5 Polyclonal antibody

Catalog Number: 22199-1-AP **1 Publications**



Basic Information

Catalog Number: 22199-1-AP	GenBank Accession Number: BC113119	Purification Method: Antigen Affinity purified
Size: 150UL, Concentration: 400 µg/ml by Nanodrop and 253 µg/ml by Bradford method using BSA as the standard;	GeneID (NCBI): 23086	Recommended Dilutions: WB 1:200-1:1000 IHC 1:20-1:200
Source: Rabbit	Full Name: exophilin 5	
Isotype: IgG	Calculated MW: 1989 aa, 223 kDa	
Immunogen Catalog Number: AG17449	Observed MW: 222-240 kDa	

Applications

Tested Applications: IHC, WB, ELISA	Positive Controls: WB : A431 cells, IHC : human oesophagus tissue, human skin tissue
Species Specificity: human	
Note-IHC: suggested antigen retrieval with TE buffer pH 9.0; (*) Alternatively, antigen retrieval may be performed with citrate buffer pH 6.0	

Background Information

EXPH5, also named as KIAA0624 or SLAC2B, is a 1989 amino acid protein, which contains one RabBD (Rab-binding) domain. EXPH5 is expressed in keratinocytes. EXPH5 may act as Rab effector protein and play a role in vesicle trafficking. EXPH5 plays a role in maintaining keratinocyte integrity, and in inherited skin fragility.

Notable Publications

Author	Pubmed ID	Journal	Application
Bryan K Sun	26545810	Genes Dev	

Storage

Storage:
Store at -20°C. Stable for one year after shipment.
Storage Buffer:
PBS with 0.02% sodium azide and 50% glycerol pH 7.3.
Aliquoting is unnecessary for -20°C storage

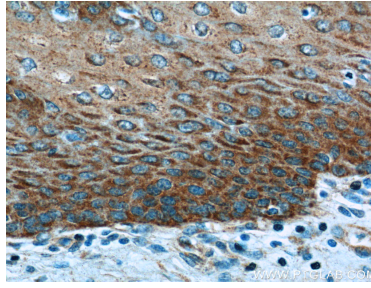
For technical support and original validation data for this product please contact:
T: 1 (888) 4PTGLAB (1-888-478-4522) (toll free in USA), or 1(312) 455-8498 (outside USA)
E: proteintech@ptglab.com
W: ptglab.com

This product is exclusively available under Proteintech Group brand and is not available to purchase from any other manufacturer.

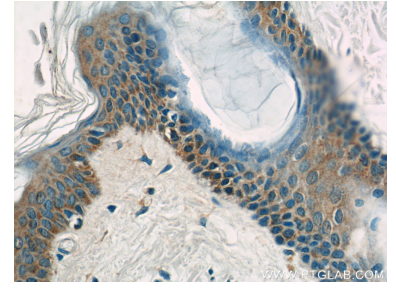
Selected Validation Data



A431 cells were subjected to SDS PAGE followed by western blot with 22199-1-AP (EXPH5 Antibody) at dilution of 1:300 incubated at room temperature for 1.5 hours.



Immunohistochemical analysis of paraffin-embedded human oesophagus tissue slide using 22199-1-AP (EXPH5 Antibody) at dilution of 1:50 (under 40x lens).



Immunohistochemical analysis of paraffin-embedded human skin tissue slide using 22199-1-AP (EXPH5 Antibody) at dilution of 1:50 (under 40x lens).