

For Research Use Only

Desmin Polyclonal antibody

Catalog Number: 22205-1-AP



Basic Information

Catalog Number: 22205-1-AP	GenBank Accession Number: BC032116	Purification Method: Antigen affinity purification
Size: 150UL, Concentration: 273 µg/ml by Bradford method using BSA as the standard;	GeneID (NCBI): 1674	Recommended Dilutions: WB 1:500-1:1000 IHC 1:20-1:200
Source: Rabbit	Full Name: desmin	
Isotype: IgG	Calculated MW: 470 aa, 54 kDa	
Immunogen Catalog Number: AG17525	Observed MW: 50-55 kDa	

Applications

Tested Applications:

IHC, WB, ELISA

Species Specificity:

human, mouse, rat

Note-IHC: suggested antigen retrieval with TE buffer pH 9.0; (*) Alternatively, antigen retrieval may be performed with citrate buffer pH 6.0

Positive Controls:

WB: mouse heart tissue, mouse skeletal muscle tissue, rat skeletal muscle tissue

IHC: human heart tissue, human skeletal muscle tissue, mouse heart tissue

Background Information

Desmin is the main intermediate filament protein in skeletal and cardiac muscle cells and is essential for both the structural integrity and the survival of muscle cells. As an abundant muscle-specific protein, desmin has been widely used as a marker of muscle derived tumors. Anti-desmin is also valuable in the differential diagnosis of tumors of uncertain origin.

Storage

Storage:

Store at -20°C. Stable for one year after shipment.

Storage Buffer:

PBS with 0.02% sodium azide and 50% glycerol pH 7.3.

Aliquoting is unnecessary for -20°C storage

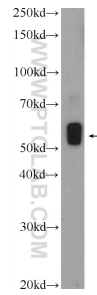
For technical support and original validation data for this product please contact:

T: 1 (888) 4PTGLAB (1-888-478-4522) (toll free in USA), or 1(312) 455-8498 (outside USA)

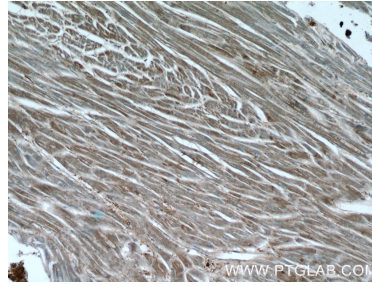
E: proteintech@ptglab.com
W: ptglab.com

This product is exclusively available under Proteintech Group brand and is not available to purchase from any other manufacturer.

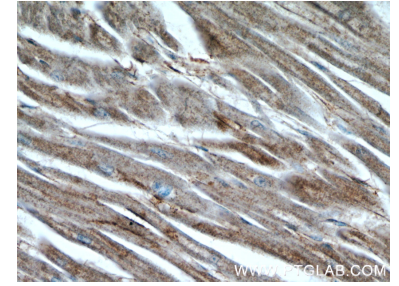
Selected Validation Data



mouse heart tissue were subjected to SDS PAGE followed by western blot with 22205-1-AP (Desmin antibody at dilution of 1:600 incubated at room temperature for 1.5 hours.



Immunohistochemical analysis of paraffin-embedded human heart tissue slide using 22205-1-AP (Desmin antibody at dilution of 1:50 (under 10x lens).



Immunohistochemical analysis of paraffin-embedded human heart tissue slide using 22205-1-AP (Desmin antibody at dilution of 1:50 (under 40x lens).