

For Research Use Only

SYK Polyclonal antibody

Catalog Number: 22206-1-AP

Featured Product

2 Publications



Basic Information

Catalog Number:

22206-1-AP

Size:

150ul, Concentration: 650 ug/ml by Nanodrop;

Source:

Rabbit

Isotype:

IgG

Immunogen Catalog Number:

AG17526

GenBank Accession Number:

BC001645

GeneID (NCBI):

6850

ENSEMBL Gene ID:

ENSG00000165025

UNIPROT ID:

P43405

Full Name:

spleen tyrosine kinase

Calculated MW:

635 aa, 72 kDa

Observed MW:

70-75 kDa

Purification Method:

Antigen affinity purification

Recommended Dilutions:

WB: 1:500-1:2000

IP: 0.5-4.0 ug for 1.0-3.0 mg of total protein lysate

IHC: 1:20-1:200

FC (Intra): 0.40 ug per 10⁶ cells in a 100 µl suspension

Applications

Tested Applications:

WB, IHC, IP, ELISA

Cited Applications:

WB

Species Specificity:

human

Cited Species:

human, mouse

Positive Controls:

WB: HEK-293 cells,

IP: HEK-293 cells,

IHC: human spleen tissue,

FC (Intra): Ramos cells,

Note-IHC: suggested antigen retrieval with TE buffer pH 9.0; (*) Alternatively, antigen retrieval may be performed with citrate buffer pH 6.0

Background Information

SYK(spleen tyrosine kinase) is a key regulator of signal transduction events,apoptosis and orderly cell cycle progression in B-lineage lymphoid cells. Although SYK has not been linked to a human disease, defective expression of the closely related T-cell tyrosine kinase ZAP-70 has been associated with severe combined immunodeficiency(PMID:11494125). This protein has 2 isoforms produced by alternative splicing. SYK also promotes liver fibrosis by activation of hepatic stellate cells and acts as a biomarker for human hepatocellular carcinoma. (PMID: 29537660)

Notable Publications

Author	Pubmed ID	Journal	Application
Hui Yin	26708990	Biochim Biophys Acta	WB
Xuelin Han	34338598	Virulence	WB

Storage

Storage:

Store at -20°C. Stable for one year after shipment.

Storage Buffer:

PBS with 0.02% sodium azide and 50% glycerol, pH7.3

Aliquoting is unnecessary for -20°C storage

*** 20ul sizes contain 0.1% BSA

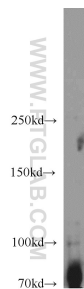
For technical support and original validation data for this product please contact:

T: 1 (888) 4PTGLAB (1-888-478-4522) (toll free in USA), or 1(312) 455-8498 (outside USA)

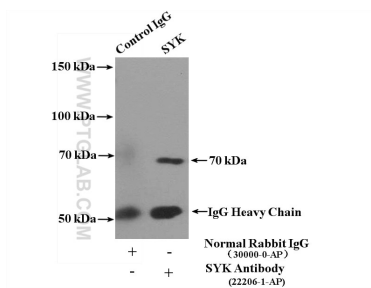
E: proteintech@ptglab.com
W: ptglab.com

This product is exclusively available under Proteintech Group brand and is not available to purchase from any other manufacturer.

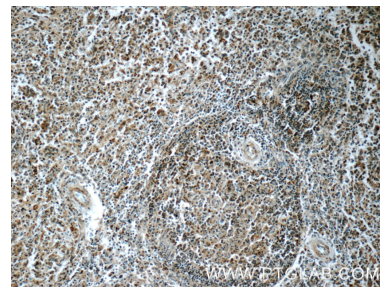
Selected Validation Data



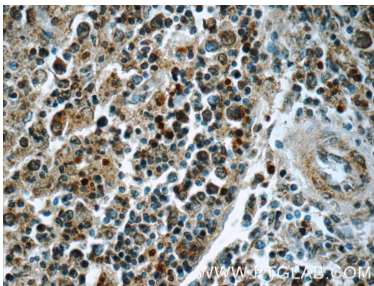
HEK-293 cells were subjected to SDS PAGE followed by western blot with 22206-1-AP (SYK antibody) at dilution of 1:1000 incubated at room temperature for 1.5 hours.



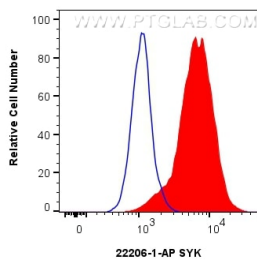
IP result of anti-SYK (IP:22206-1-AP, 4ug; Detection:22206-1-AP 1:500) with HEK-293 cells lysate 2700ug.



Immunohistochemical analysis of paraffin-embedded human spleen tissue slide using 22206-1-AP (SYK Antibody) at dilution of 1:50 (under 10x lens).



Immunohistochemical analysis of paraffin-embedded human spleen tissue slide using 22206-1-AP (SYK Antibody) at dilution of 1:50 (under 40x lens).



1×10^6 Ramos cells were intracellularly stained with 0.4 ug SYK Polyclonal antibody (22206-1-AP) and CoraLite®488-Conjugated Goat Anti-Rabbit IgG(H+L) (SA00013-2)(red), or 0.4 ug Rabbit IgG control Rabbit PolyAb (30000-0-AP) (blue). Cells were fixed with 4% PFA and permeabilized with Flow Cytometry Perm Buffer (PF00011-C).