

For Research Use Only

FOXP3 Polyclonal antibody

Catalog Number: 22228-1-AP **30 Publications**



Basic Information

Catalog Number:

22228-1-AP

Size:

150ul, Concentration: 600 µg/ml by Nanodrop and 293 µg/ml by Bradford method using BSA as the standard;

Source:

Rabbit

Isotype:

IgG

Immunogen Catalog Number:

AG17571

GenBank Accession Number:

BC113401

GeneID (NCBI):

50943

Full Name:

forkhead box P3

Calculated MW:

431 aa, 47 kDa

Observed MW:

50-55 kDa

Purification Method:

Antigen affinity purification

Recommended Dilutions:

WB 1:500-1:2000

IP 0.5-4.0 ug for IP and 1:500-1:2000 for WB

Applications

Tested Applications:

IP, WB, ELISA

Cited Applications:

CoIP, WB

Species Specificity:

human, mouse, rat

Cited Species:

human, mouse, rat

Positive Controls:

WB: HeLa cells, multi-cells, multi-cells/tissue, A375 cells, mouse brain tissue, HEK-293 cells

IP: HeLa cells,

Background Information

FOXP3, also named as IPEX, JM2 and Scurfin, is a transcription factor. FOXP3 plays a critical role in the control of immune response. Defects in FOXP3 are the cause of immunodeficiency polyendocrinopathy, enteropathy, X-linked syndrome (IPEX) which also known as X-linked autoimmunity-immunodeficiency syndrome. This antibody is a rabbit polyclonal antibody raised against a peptide mapping within human FOXP3.

Notable Publications

Author	Pubmed ID	Journal	Application
Kai Guo	34514877	Thyroid	IHC
Jianyu Yang	31583260	J Immunol Res	WB, IHC
Zhao Ming M	24316592	Clin Immunol	WB

Storage

Storage:

Store at -20°C. Stable for one year after shipment.

Storage Buffer:

PBS with 0.02% sodium azide and 50% glycerol pH 7.3.

Aliquoting is unnecessary for -20°C storage

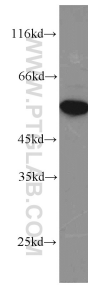
For technical support and original validation data for this product please contact:

T: 1 (888) 4PTGLAB (1-888-478-4522) (toll free in USA), or 1(312) 455-8498 (outside USA)

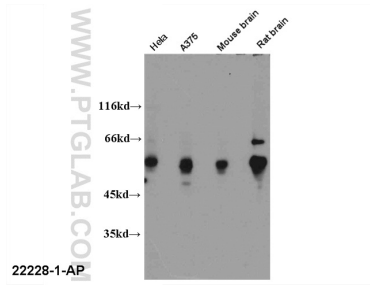
E: proteintech@ptglab.com
W: ptglab.com

This product is exclusively available under Proteintech Group brand and is not available to purchase from any other manufacturer.

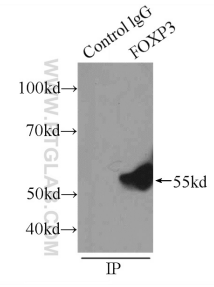
Selected Validation Data



HeLa cells were subjected to SDS PAGE followed by western blot with 22228-1-AP (FOXP3 antibody) at dilution of 1:2000 incubated at room temperature for 1.5 hours.



WB results of 22228-1-AP (FOXP3 antibody).



IP Result of anti-FOXP3 (IP:22228-1-AP, 3ug; Detection:22228-1-AP 1:1000) with HeLa cells lysate 1840ug.