

For Research Use Only

# RBM15B Polyclonal antibody

Catalog Number: 22249-1-AP **4 Publications**



## Basic Information

**Catalog Number:**

22249-1-AP

**Size:**

150UL, Concentration: 267 µg/ml by Bradford method using BSA as the standard;

**Source:**

Rabbit

**Isotype:**

IgG

**Immunogen Catalog Number:**

AG17744

**GenBank Accession Number:**

BC001367

**GeneID (NCBI):**

29890

**Full Name:**

RNA binding motif protein 15B

**Calculated MW:**

890 aa, 97 kDa

**Observed MW:**

100-120 kDa, 70 kDa

**Purification Method:**

Antigen affinity purification

**Recommended Dilutions:**

WB 1:500-1:3000

IP 0.5-4.0 µg for IP and 1:500-1:1000 for WB

## Applications

**Tested Applications:**

IP, WB, ELISA

**Cited Applications:**

IHC, WB

**Species Specificity:**

human, mouse, rat

**Cited Species:**

human, mouse

**Positive Controls:**

WB: HeLa cells, HEK-293 cells, mouse brain tissue

IP: HeLa cells,

## Background Information

RBM15B, one members of the SPEN (Split-end) family of proteins, have repressor function in several signaling pathways and may bind to RNA through interaction with spliceosome components. Present polyclonal anti-RBM15B antibody was produced by immunizing animals with C-terminus of RBM15B, which homolog with a short form of RBM15B(563aa, ~70kDa), thus this antibody can recognize full length of RBM15B(~100kDa) and splice-one(70kDa)

## Notable Publications

Author	Pubmed ID	Journal	Application
He Huang	32847866	eNeuro	WB
Elodie Villa	33756106	Mol Cell	WB
Wenqi Xu	33505026	Nature	WB

## Storage

**Storage:**

Store at -20°C. Stable for one year after shipment.

**Storage Buffer:**

PBS with 0.02% sodium azide and 50% glycerol pH 7.3.

Aliquoting is unnecessary for -20°C storage

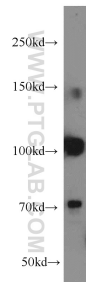
For technical support and original validation data for this product please contact:

T: 1 (888) 4PTGLAB (1-888-478-4522) (toll free in USA), or 1(312) 455-8498 (outside USA)

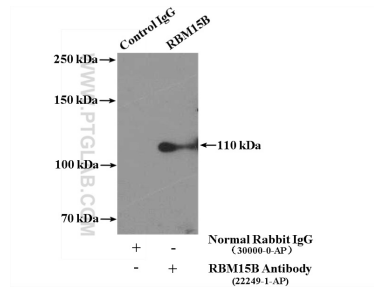
E: [proteintech@ptglab.com](mailto:proteintech@ptglab.com)  
W: [ptglab.com](http://ptglab.com)

**This product is exclusively available under Proteintech Group brand and is not available to purchase from any other manufacturer.**

## Selected Validation Data



HeLa cells were subjected to SDS PAGE followed by western blot with 22249-1-AP (RBM15B antibody) at dilution of 1:2000 incubated at room temperature for 1.5 hours.



IP Result of anti-RBM15B (IP:22249-1-AP, 4ug; Detection:22249-1-AP 1:500) with HeLa cells lysate 2500ug.