

For Research Use Only

# ASF1A-specific Polyclonal ANTIBODY



Catalog Number: 22259-1-AP

## Basic Information

<b>Catalog Number:</b> 22259-1-AP	<b>GenBank Accession Number:</b> BC010878	<b>Purification Method:</b> Antigen affinity purification
<b>Size:</b> 150UL, Concentration: 493 µg/ml by Bradford method using BSA as the standard;	<b>GeneID (NCBI):</b> 25842	<b>Recommended Dilutions:</b> WB 1:500-1:2000 IF 1:50-1:500
<b>Source:</b> Rabbit	<b>Full Name:</b> ASF1 anti-silencing function 1 homolog A ( <i>S. cerevisiae</i> )	
<b>Isotype:</b> IgG	<b>Calculated MW:</b> 204 aa, 23 kDa	
<b>Immunogen Catalog Number:</b> AG17764	<b>Observed MW:</b> 20-23 kDa	

## Applications

<b>Tested Applications:</b> IF, WB, ELISA	<b>Positive Controls:</b> WB: NIH/3T3 cells, HeLa cells
<b>Species Specificity:</b> human, mouse, rat	IF: NIH/3T3 cells,

## Background Information

This gene encodes a member of the H3/H4 family of histone chaperone proteins and is similar to the anti-silencing function-1 gene in yeast. The protein is a key component of a histone donor complex that functions in nucleosome assembly. It interacts with histones H3 and H4, and functions together with a chromatin assembly factor during DNA replication and repair. This antibody is specific to the 23kd ASF1A protein.

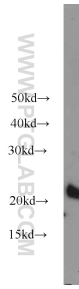
## Storage

**Storage:**  
Store at -20°C. Stable for one year after shipment.  
**Storage Buffer:**  
PBS with 0.02% sodium azide and 50% glycerol pH 7.3.  
Aliquoting is unnecessary for -20°C storage

For technical support and original validation data for this product please contact:  
T: 1 (888) 4PTGLAB (1-888-478-4522) (toll free in USA), or 1(312) 455-8498 (outside USA)  
E: proteintech@ptglab.com  
W: ptglab.com

This product is exclusively available under Proteintech Group brand and is not available to purchase from any other manufacturer.

## Selected Validation Data



NIH/3T3 cells were subjected to SDS PAGE followed by western blot with 22259-1-AP (ASF1A antibody) at dilution of 1:1000 incubated at room temperature for 1.5 hours.



Immunofluorescent analysis of (10% Formaldehyde) fixed NIH/3T3 cells using 22259-1-AP (ASF1A antibody) at dilution of 1:50 and Alexa Fluor 488-conjugated AffiniPure Goat Anti-Rabbit IgG(H+L).