

For Research Use Only

MYH6 Polyclonal antibody

Catalog Number: 22281-1-AP

10 Publications



Basic Information

Catalog Number: 22281-1-AP	GenBank Accession Number: NM_002471	Purification Method: Antigen affinity purification
Size: 150UL, Concentration: 433 µg/ml by Bradford method using BSA as the standard;	GeneID (NCBI): 4624	Recommended Dilutions: WB 1:2000-1:20000 IHC 1:20-1:200 IF 1:50-1:500
Source: Rabbit	Full Name: myosin, heavy chain 6, cardiac muscle, alpha	
Isotype: IgG	Calculated MW: 224 kDa	
	Observed MW: 200-220 kDa	

Applications

Tested Applications: IF, IHC, WB, ELISA	Positive Controls: WB : rat heart tissue, IHC : human heart tissue, mouse heart tissue IF : mouse heart tissue,
Cited Applications: IF, IHC, WB	
Species Specificity: human, mouse, rat	
Cited Species: human, mouse, rat	

Note-IHC: suggested antigen retrieval with TE buffer pH 9.0; (*) Alternatively, antigen retrieval may be performed with citrate buffer pH 6.0

Background Information

MYH6 encodes the alpha-cardiac myosin heavy chain (αMHC) which is a major contractile protein exclusively expressed in the myocardium of the heart. Expression of MYH6 is down-regulated in cardiac myopathy and failing hearts. Defects in MYH6 lead to congenital heart disease (CHD), and a spectrum of phenotypes ranging from hypertrophic cardiomyopathy (HCM) and dilated cardiomyopathy (DCM). (15737621, 20656787)

Notable Publications

Author	Pubmed ID	Journal	Application
Silvia Mazzotta	27641648	Stem Cell Reports	IF
Chen Ni	30426505	J Pathol	
Yuka Yajima	29748547	Sci Rep	IHC

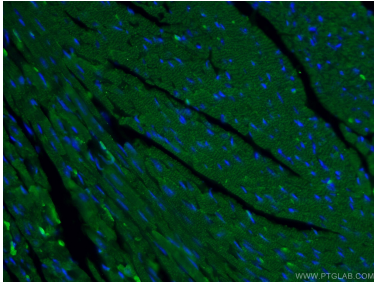
Storage

Storage:
Store at -20°C. Stable for one year after shipment.
Storage Buffer:
PBS with 0.02% sodium azide and 50% glycerol pH 7.3.
Aliquoting is unnecessary for -20°C storage

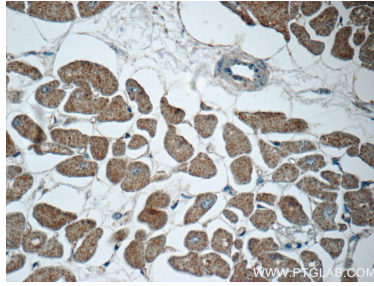
For technical support and original validation data for this product please contact:
T: 1 (888) 4PTGLAB (1-888-478-4522) (toll free in USA), or 1(312) 455-8498 (outside USA)
E: proteintech@ptglab.com
W: ptglab.com

This product is exclusively available under Proteintech Group brand and is not available to purchase from any other manufacturer.

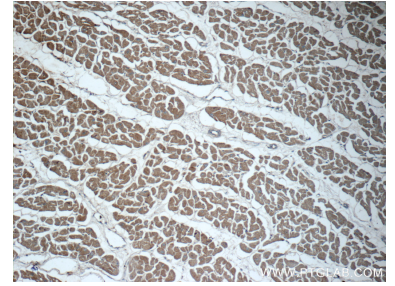
Selected Validation Data



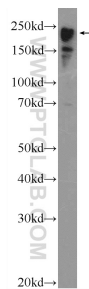
Immunofluorescent analysis of (4% PFA) fixed mouse heart tissue using 22281-1-AP (MYH6 antibody) at dilution of 1:50 and Alexa Fluor 488-conjugated AffiniPure Goat Anti-Rabbit IgG(H+L).



Immunohistochemical analysis of paraffin-embedded human heart tissue slide using 22281-1-AP (MYH6 Antibody) at dilution of 1:50 (under 40x lens).



Immunohistochemical analysis of paraffin-embedded human heart tissue slide using 22281-1-AP (MYH6 Antibody) at dilution of 1:50 (under 10x lens).



rat heart tissue were subjected to SDS PAGE followed by western blot with 22281-1-AP (MYH6 Antibody) at dilution of 1:5000 incubated at room temperature for 1.5 hours.