

SAR1A Polyclonal ANTIBODY

Catalog Number: 22291-1-AP

Basic Information

Catalog Number: 22291-1-AP	GenBank Accession Number: NM_020150	Recommended Dilutions: WB 1:500-1:1000 IHC 1:20-1:200
Size: 44 µg/150 µl	GeneID (NCBI): 56681	
Source: Rabbit	Full Name: SAR1 homolog A (S. cerevisiae)	
Isotype: IgG	Calculated MW: 22 kDa	
Purification Method: Antigen affinity purification	Observed MW: 23-25 kDa	
Immunogen Catalog Number:		

Applications

Tested Applications:
IHC, WB, ELISA

Species Specificity:
human, mouse, rat

Note: suggested antigen retrieval with TE buffer pH 9.0; (*) Alternatively, antigen retrieval may be performed with citrate buffer pH 6.0

Positive Controls:

WB: HepG2 cells; HeLa cells, HT-1080 cells, mouse kidney tissue

IHC: human skeletal muscle tissue;

Background Information

SAR1A, also named as SAR1, SARA and SARA1, belongs to the small GTPase superfamily and SAR1 family. It is involved in transport from the endoplasmic reticulum to the Golgi apparatus. SAR1A is required to maintain SEC16A localization at discrete locations on the ER membrane perhaps by preventing its dissociation. SAR1A-GTP-dependent assembly of SEC16A on the ER membrane forms an organized scaffold defining endoplasmic reticulum exit sites (ERES). The antibody is specific to SAR1A.

Notable Publications

Author	Pubmed ID	Journal	Application
--------	-----------	---------	-------------

Storage

Storage:
Store at -20°C. Stable for one year after shipment.
Storage Buffer:
PBS with 0.02% sodium azide and 50% glycerol pH 7.3.
Aliquoting is unnecessary for -20°C storage

For technical support and original validation data for this product please contact:

T: 1 (888) 4PTGLAB (1-888-478-4522) (toll free in USA), or 1(312) 455-8498 (outside USA)

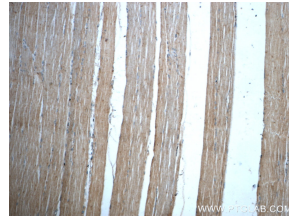
E: proteintech@ptglab.com
W: ptglab.com

This product is exclusively available under Proteintech Group brand and is not available to purchase from any other manufacturer.

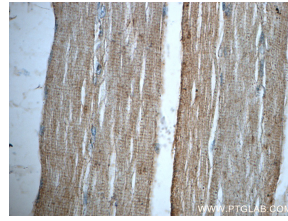
Selected Validation Data



HepG2 cells were subjected to SDS PAGE followed by western blot with 22291-1-AP(SAR1A antibody) at dilution of 1:500 incubated at room temperature for 1.5 hours



Immunohistochemistry of paraffin-embedded human skeletal muscle slide using 22291-1-AP(SAR1A Antibody) at dilution of 1:50



Immunohistochemistry of paraffin-embedded human skeletal muscle slide using 22291-1-AP(SAR1A Antibody) at dilution of 1:50