

For Research Use Only

CCL27 Polyclonal antibody

Catalog Number: 22301-1-AP



Basic Information

Catalog Number: 22301-1-AP	GenBank Accession Number: NM_006664	Purification Method: Antigen affinity purification
Size: 150UL, Concentration: 260 µg/ml by Bradford method using BSA as the standard;	GeneID (NCBI): 10850	Recommended Dilutions: IHC 1:20-1:200 IF 1:10-1:100
Source: Rabbit	Full Name: chemokine (C-C motif) ligand 27	
Isotype: IgG	Calculated MW: 13 kDa	

Applications

Tested Applications: IF, IHC, ELISA	Positive Controls: IHC : human testis tissue, human liver tissue, human liver cancer tissue, human skin tissue, human skin cancer tissue
Species Specificity: human	IF : A431 cells,
Note-IHC: suggested antigen retrieval with TE buffer pH 9.0; (*) Alternatively, antigen retrieval may be performed with citrate buffer pH 6.0	

Background Information

CCL27, also known as CTACK, is a member of the CC chemokine subfamily. CCL27 is predominantly expressed in skin and selectively attracts cutaneous lymphocyte antigen-positive T cells and Langerhans cells. The CCL27 secreted from keratinocytes was reportedly involved in inflammatory skin diseases such as atopic dermatitis, contact dermatitis, and psoriasis. CCL27 is a ligand to CCR10. The binding of CCL27 to CCR10 on T cells promotes their migration to the skin, where they can then participate in local immune responses.

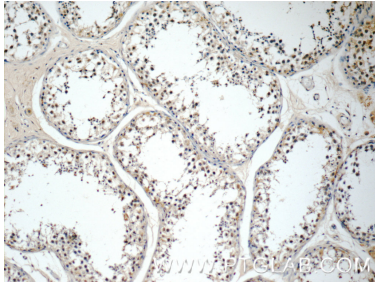
Storage

Storage:
Store at -20°C. Stable for one year after shipment.
Storage Buffer:
PBS with 0.02% sodium azide and 50% glycerol pH 7.3.
Aliquoting is unnecessary for -20°C storage

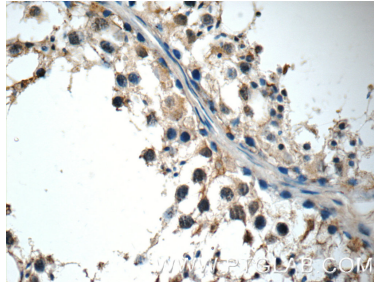
For technical support and original validation data for this product please contact:
T: 1 (888) 4PTGLAB (1-888-478-4522) (toll free in USA), or 1(312) 455-8498 (outside USA)
E: proteintech@ptglab.com
W: ptglab.com

This product is exclusively available under Proteintech Group brand and is not available to purchase from any other manufacturer.

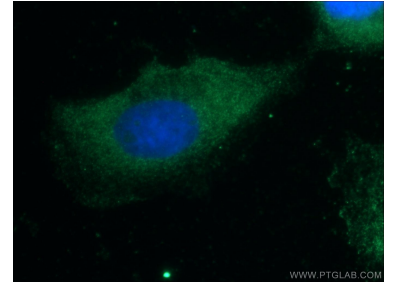
Selected Validation Data



Immunohistochemical analysis of paraffin-embedded human testis tissue slide using 22301-1-AP (CCL27 Antibody) at dilution of 1:50 (under 10x lens).



Immunohistochemical analysis of paraffin-embedded human testis tissue slide using 22301-1-AP (CCL27 Antibody) at dilution of 1:50 (under 40x lens).



Immunofluorescent analysis of A431 cells using 22301-1-AP (CCL27 antibody) at dilution of 1:25 and Alexa Fluor 488-conjugated AffiniPure Goat Anti-Rabbit IgG(H+L).