

For Research Use Only

# ATP2A1 Polyclonal ANTIBODY



Catalog Number: 22361-1-AP **2 Publications**

## Basic Information

**Catalog Number:**

22361-1-AP

**Size:**

150UL, Concentration: 380 µg/ml by Bradford method using BSA as the standard;

**Source:**

Rabbit

**Isotype:**

IgG

**Immunogen Catalog Number:**

AG17944

**GenBank Accession Number:**

BC037354

**GeneID (NCBI):**

487

**Full Name:**

ATPase, Ca<sup>++</sup> transporting, cardiac muscle, fast twitch 1

**Calculated MW:**

1001 aa, 110 kDa

**Observed MW:**

116 kDa

**Purification Method:**

Antigen Affinity purified

**Recommended Dilutions:**

IP 0.5-4.0 ug for IP and 1:500-1:1000 for WB  
IHC 1:50-1:500

## Applications

**Tested Applications:**

IHC, IP, ELISA

**Cited Applications:**

WB

**Species Specificity:**

human, mouse

**Cited Species:**

mouse

**Positive Controls:**

IP: mouse skeletal muscle tissue,

IHC: human skeletal muscle tissue, human heart tissue

**Note-IHC: suggested antigen retrieval with TE buffer pH 9.0; (\*) Alternatively, antigen retrieval may be performed with citrate buffer pH 6.0**

## Background Information

### Notable Publications

Author	Pubmed ID	Journal	Application
Nagakatsu Harada	32451822	J Muscle Res Cell Motil	WB
Jie Yang	31479920	Mol Ther Nucleic Acids	WB

## Storage

**Storage:**

Store at -20°C. Stable for one year after shipment.

**Storage Buffer:**

PBS with 0.02% sodium azide and 50% glycerol pH 7.3.

Aliquoting is unnecessary for -20°C storage

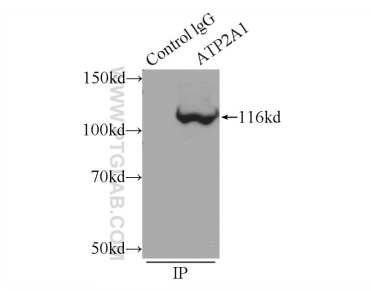
For technical support and original validation data for this product please contact:

T: 1 (888) 4PTGLAB (1-888-478-4522) (toll free in USA), or 1(312) 455-8498 (outside USA)

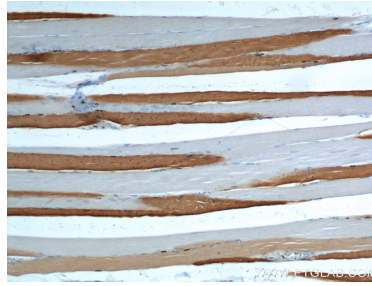
E: proteintech@ptglab.com  
W: ptglab.com

**This product is exclusively available under Proteintech Group brand and is not available to purchase from any other manufacturer.**

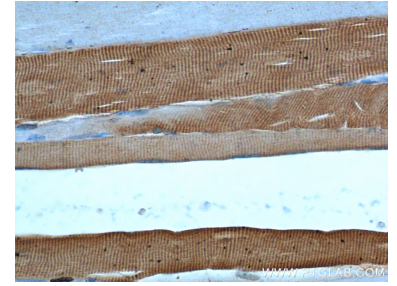
## Selected Validation Data



IP Result of anti-ATP2A1 (IP:22361-1-AP, 5 $\mu$ g; Detection:22361-1-AP 1:700) with mouse skeletal muscle tissue lysate 2160 $\mu$ g.



Immunohistochemical analysis of paraffin-embedded human skeletal muscle tissue slide using 22361-1-AP (ATP2A1 Antibody) at dilution of 1:200 (under 10x lens).



Immunohistochemical analysis of paraffin-embedded human skeletal muscle tissue slide using 22361-1-AP (ATP2A1 Antibody) at dilution of 1:200 (under 40x lens).