

For Research Use Only

GYS2 Polyclonal antibody

Catalog Number: 22371-1-AP **1 Publications**



Basic Information

Catalog Number:

22371-1-AP

Size:

150ul , Concentration: 533 µg/ml by Bradford method using BSA as the standard;

Source:

Rabbit

Isotype:

IgG

Immunogen Catalog Number:

AG18012

GenBank Accession Number:

BC126310

GeneID (NCBI):

2998

Full Name:

glycogen synthase 2 (liver)

Calculated MW:

703 aa, 81 kDa

Observed MW:

81 kDa

Purification Method:

Antigen affinity purification

Recommended Dilutions:

WB 1:2000-1:16000

IP 0.5-4.0 ug for IP and 1:500-1:2000

for WB

IHC 1:50-1:500

Applications

Tested Applications:

IHC, IP, WB, ELISA

Cited Applications:

WB

Species Specificity:

human, mouse, rat

Cited Species:

mouse

Note-IHC: suggested antigen retrieval with TE buffer pH 9.0; (*) Alternatively, antigen retrieval may be performed with citrate buffer pH 6.0

Positive Controls:

WB : mouse liver tissue, mouse kidney tissue, rat liver tissue

IP : rat liver tissue,

IHC : human liver tissue,

Background Information

Notable Publications

Author	Pubmed ID	Journal	Application
Chao Xin	34028050	J Food Biochem	WB

Storage

Storage:

Store at -20°C. Stable for one year after shipment.

Storage Buffer:

PBS with 0.02% sodium azide and 50% glycerol pH 7.3.

Aliquoting is unnecessary for -20°C storage

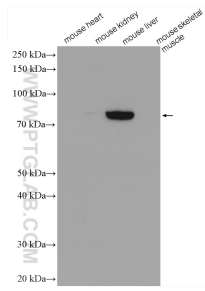
For technical support and original validation data for this product please contact:

T: 1 (888) 4PTGLAB (1-888-478-4522) (toll free in USA), or 1(312) 455-8498 (outside USA)

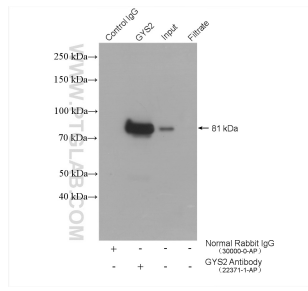
E: proteintech@ptglab.com
W: ptglab.com

This product is exclusively available under Proteintech Group brand and is not available to purchase from any other manufacturer.

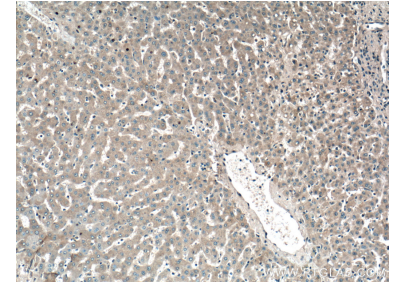
Selected Validation Data



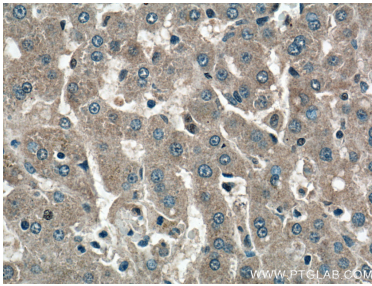
Various lysates were subjected to SDS PAGE followed by western blot with 22371-1-AP (GYS2 antibody) at dilution of 1:8000 incubated at room temperature for 1.5 hours. Mouse heart/ kidney/ skeletal muscle are negative control.



IP result of anti-GYS2 (IP:22371-1-AP, 4ug; Detection:22371-1-AP 1:1000) with rat liver tissue lysate 4000 ug.



Immunohistochemical analysis of paraffin-embedded human liver tissue slide using 22371-1-AP (GYS2 antibody) at dilution of 1:200 (under 10x lens).



Immunohistochemical analysis of paraffin-embedded human liver tissue slide using 22371-1-AP (GYS2 antibody) at dilution of 1:200 (under 40x lens).