

For Research Use Only

GRIP1 Polyclonal antibody

Catalog Number: 22398-1-AP **2 Publications**



Basic Information

Catalog Number:

22398-1-AP

Size:

150ul, Concentration: 700 µg/ml by Nanodrop and 533 µg/ml by Bradford method using BSA as the standard;

Source:

Rabbit

Isotype:

IgG

Immunogen Catalog Number:

AG18071

GenBank Accession Number:

BC115393

GeneID (NCBI):

23426

Full Name:

glutamate receptor interacting protein 1

Calculated MW:

1128 aa, 122 kDa

Observed MW:

130-135 kDa

Purification Method:

Antigen affinity purification

Recommended Dilutions:

WB 1:500-1:2000

IP 0.5-4.0 ug for IP and 1:500-1:2000 for WB

IHC 1:20-1:200

Applications

Tested Applications:

IHC, IP, WB, ELISA

Cited Applications:

IF, WB

Species Specificity:

human, mouse, rat

Cited Species:

mouse

Note-IHC: suggested antigen retrieval with TE buffer pH 9.0; (*) Alternatively, antigen retrieval may be performed with citrate buffer pH 6.0

Positive Controls:

WB: mouse brain tissue, mouse testis tissue, rat brain tissue

IP: mouse brain tissue,

IHC: human kidney tissue,

Background Information

Notable Publications

Author	Pubmed ID	Journal	Application
Rui Dang	30266599	Neuropharmacology	WB
Akira Kinoshita	34338282	Development	IF

Storage

Storage:

Store at -20°C. Stable for one year after shipment.

Storage Buffer:

PBS with 0.02% sodium azide and 50% glycerol pH 7.3.

Aliquoting is unnecessary for -20°C storage

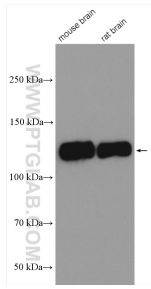
For technical support and original validation data for this product please contact:

T: 1 (888) 4PTGLAB (1-888-478-4522) (toll free in USA), or 1(312) 455-8498 (outside USA)

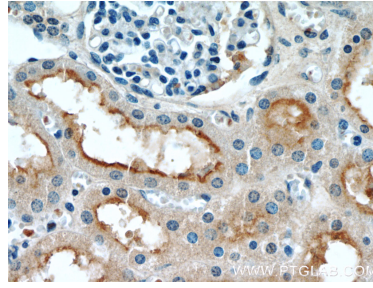
E: proteintech@ptglab.com
W: ptglab.com

This product is exclusively available under Proteintech Group brand and is not available to purchase from any other manufacturer.

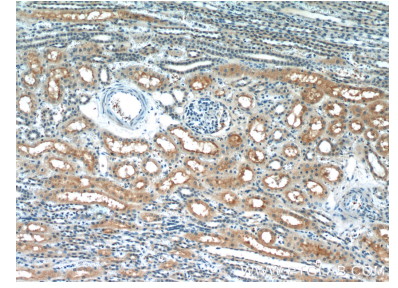
Selected Validation Data



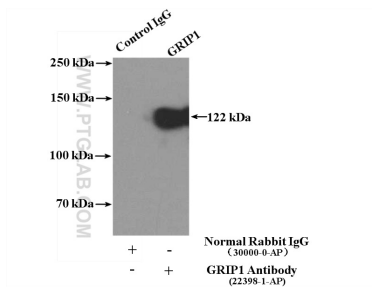
Various lysates were subjected to SDS PAGE followed by western blot with 22398-1-AP (GRIP1 antibody) at dilution of 1:1000 incubated at room temperature for 1.5 hours.



Immunohistochemical analysis of paraffin-embedded human kidney slide using 22398-1-AP (GRIP1 Antibody) at dilution of 1:50.



Immunohistochemical analysis of paraffin-embedded human kidney slide using 22398-1-AP (GRIP1 Antibody) at dilution of 1:50.



IP Result of anti-GRIP1 (IP:22398-1-AP, 4ug; Detection:22398-1-AP 1:1000) with mouse brain tissue lysate 5200ug.