

For Research Use Only

# ABLIM2 Polyclonal antibody

Catalog Number: 22433-1-AP



## Basic Information

**Catalog Number:**  
22433-1-AP

**Size:**  
150UL, Concentration: 273 µg/ml by Bradford method using BSA as the standard;

**Source:**  
Rabbit

**Isotype:**  
IgG

**Immunogen Catalog Number:**  
AG18198

**GenBank Accession Number:**  
BC122567

**GeneID (NCBI):**  
84448

**Full Name:**  
actin binding LIM protein family, member 2

**Calculated MW:**  
611 aa, 68 kDa

**Observed MW:**  
60-70 kDa

**Purification Method:**  
Antigen affinity purification

**Recommended Dilutions:**  
WB 1:500-1:2000  
IP 0.5-4.0 µg for IP and 1:500-1:2000 for WB  
IHC 1:20-1:200

## Applications

**Tested Applications:**  
IHC, IP, WB, ELISA

**Species Specificity:**  
human, mouse, rat

**Note-IHC: suggested antigen retrieval with TE buffer pH 9.0; (\*) Alternatively, antigen retrieval may be performed with citrate buffer pH 6.0**

**Positive Controls:**

**WB:** mouse brain tissue, mouse skeletal muscle tissue

**IP:** mouse brain tissue,

**IHC:** human skeletal muscle tissue, human kidney tissue

## Background Information

### Storage

**Storage:**

Store at -20°C. Stable for one year after shipment.

**Storage Buffer:**

PBS with 0.02% sodium azide and 50% glycerol pH 7.3.

Aliquoting is unnecessary for -20°C storage

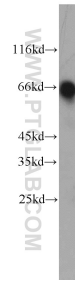
For technical support and original validation data for this product please contact:

T: 1 (888) 4PTGLAB (1-888-478-4522) (toll free in USA), or 1(312) 455-8498 (outside USA)

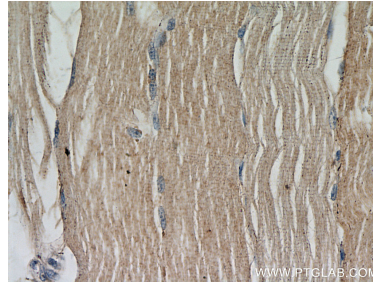
E: [proteintech@ptglab.com](mailto:proteintech@ptglab.com)  
W: [ptglab.com](http://ptglab.com)

**This product is exclusively available under Proteintech Group brand and is not available to purchase from any other manufacturer.**

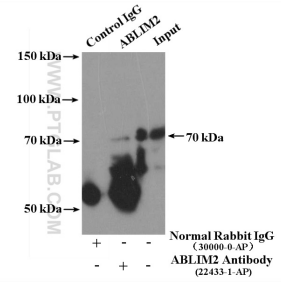
## Selected Validation Data



mouse brain tissue were subjected to SDS PAGE followed by western blot with 22433-1-AP (ABLIM2 antibody) at dilution of 1:1000 incubated at room temperature for 1.5 hours.



Immunohistochemical analysis of paraffin-embedded human skeletal muscle slide using 22433-1-AP (ABLIM2 Antibody) at dilution of 1:50.



IP Result of anti-ABLIM2 (IP:22433-1-AP, 4ug; Detection:22433-1-AP 1:1000) with mouse brain tissue lysate 5200ug.