

For Research Use Only

# LARG Polyclonal antibody

Catalog Number: 22441-1-AP

Featured Product

5 Publications



## Basic Information

### Catalog Number:

22441-1-AP

### Size:

150ul, Concentration: 1000 ug/ml by Nanodrop and 493 ug/ml by Bradford method using BSA as the standard;

### Source:

Rabbit

### Isotype:

IgG

### Immunogen Catalog Number:

AG18211

### GenBank Accession Number:

BC063117

### GeneID (NCBI):

23365

### UNIPROT ID:

Q9NZN5

### Full Name:

Rho guanine nucleotide exchange factor (GEF) 12

### Calculated MW:

1544 aa, 173 kDa

### Observed MW:

220 kDa

### Purification Method:

Antigen affinity purification

### Recommended Dilutions:

WB 1:1000-1:4000

IHC 1:20-1:200

IF/ICC 1:20-1:200

## Applications

### Tested Applications:

WB, IHC, IF/ICC, ELISA

### Cited Applications:

WB, IHC, IP

### Species Specificity:

human

### Cited Species:

human, mouse

**Note-IHC: suggested antigen retrieval with TE buffer pH 9.0; (\*) Alternatively, antigen retrieval may be performed with citrate buffer pH 6.0**

### Positive Controls:

WB: Jurkat cells, HeLa cells

IHC: human testis tissue,

IF/ICC: HepG2 cells, HeLa cells

## Background Information

LARG, also known as ARHGEF12, is one of three regulator of G protein signalling (RGS) domain-containing RhoGEFs. LARG activates the ROCK pathway downstream of Gα12/13 signaling, leading to cytoskeletal reorganisation. LARG performs this activity either as a homodimer or as a heterodimer with Arhgef11. LARG has been implicated in many diseases, including cancer, heart disease, and in HIV viral replication. LARG is phosphorylated and dephosphorylated during mitosis and that Cdk1 is the mitotic kinase responsible for LARG phosphorylation. We got 220 kDa in western blotting, maybe due to its phosphorylation.

## Notable Publications

Author	Pubmed ID	Journal	Application
Feng Zhang	33085791	Br J Pharmacol	WB
Hongyu Sun	36233059	Int J Mol Sci	WB
Zonghui Ding	32693062	Am J Pathol	WB, IHC

## Storage

### Storage:

Store at -20°C. Stable for one year after shipment.

### Storage Buffer:

PBS with 0.02% sodium azide and 50% glycerol pH 7.3.

Aliquoting is unnecessary for -20°C storage

\*\*\* 20ul sizes contain 0.1% BSA

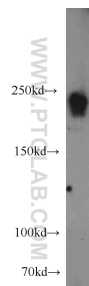
For technical support and original validation data for this product please contact:

T: 1 (888) 4PTGLAB (1-888-478-4522) (toll free in USA), or 1(312) 455-8498 (outside USA)

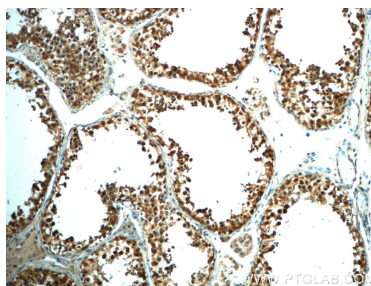
E: [proteintech@ptglab.com](mailto:proteintech@ptglab.com)  
W: [ptglab.com](http://ptglab.com)

This product is exclusively available under Proteintech Group brand and is not available to purchase from any other manufacturer.

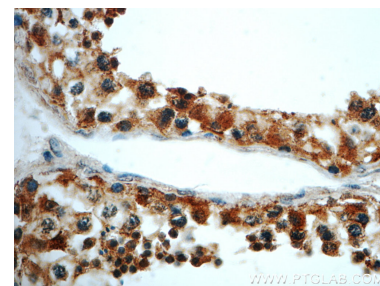
## Selected Validation Data



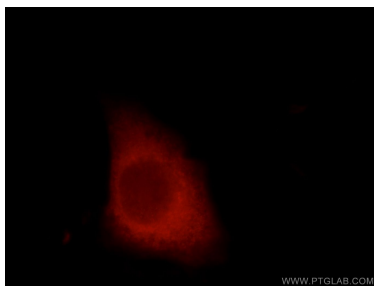
Jurkat cells were subjected to SDS PAGE followed by western blot with 22441-1-AP (LARG antibody) at dilution of 1:2000 incubated at room temperature for 1.5 hours.



Immunohistochemical analysis of paraffin-embedded human testis slide using 22441-1-AP (LARG Antibody) at dilution of 1:50.



Immunohistochemical analysis of paraffin-embedded human testis slide using 22441-1-AP (LARG Antibody) at dilution of 1:50.



Immunofluorescent analysis of HepG2 cells, using ARHGEF12 antibody 22441-1-AP at 1:50 dilution and Rhodamine-labeled goat anti-rabbit IgG (red).