

For Research Use Only

EAAT2 Polyclonal antibody

Catalog Number: 22515-1-AP **6 Publications**



Basic Information

Catalog Number:

22515-1-AP

Size:

150UL, Concentration: 187 µg/ml by Bradford method using BSA as the standard;

Source:

Rabbit

Isotype:

IgG

Immunogen Catalog Number:

AG18247

GenBank Accession Number:

BC132768

GeneID (NCBI):

6506

Full Name:

solute carrier family 1 (glial high affinity glutamate transporter), member 2

Calculated MW:

574 aa, 62 kDa

Observed MW:

60-70 kDa, 140 kDa

Purification Method:

Antigen affinity purification

Recommended Dilutions:

WB 1:500-1:2000

IP 0.5-4.0 µg for IP and 1:500-1:2000 for WB

IHC 1:20-1:200

Applications

Tested Applications:

IHC, IP, WB, ELISA

Cited Applications:

WB

Species Specificity:

human, mouse, rat

Cited Species:

mouse, rat

Note-IHC: suggested antigen retrieval with TE buffer pH 9.0; (*) Alternatively, antigen retrieval may be performed with citrate buffer pH 6.0

Positive Controls:

WB: mouse brain tissue, rat brain tissue

IP: mouse brain tissue,

IHC: human brain tissue,

Background Information

EAAT2 (also known as GLT-1), is encoded by SLC1A2 and is a glutamate transporter which can clear the majority of extracellular glutamate in brain and prevent brain seizures. Three isoforms of EAAT2 exist due to the alternative splicing. In addition to the 65-70 kDa monomer form, 130-150 kDa dimer of EAAT2 can also be observed on SDS-PAGE. (PMID: 22114258)

Notable Publications

Author	Pubmed ID	Journal	Application
Wenlong Zhang	33093440	Cell Death Dis	WB
Chunjiang Yu	28612507	Aging Cell	WB
Longze Sha	32724478	Theranostics	WB

Storage

Storage:

Store at -20°C. Stable for one year after shipment.

Storage Buffer:

PBS with 0.02% sodium azide and 50% glycerol pH 7.3.

Aliquoting is unnecessary for -20°C storage

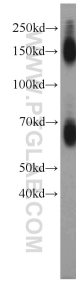
For technical support and original validation data for this product please contact:

T: 1 (888) 4PTGLAB (1-888-478-4522) (toll free in USA), or 1(312) 455-8498 (outside USA)

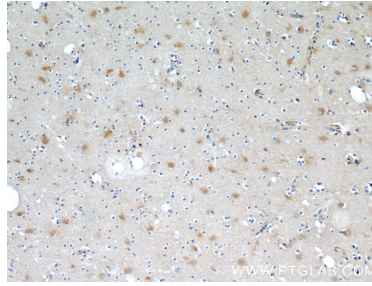
E: proteintech@ptglab.com
W: ptglab.com

This product is exclusively available under Proteintech Group brand and is not available to purchase from any other manufacturer.

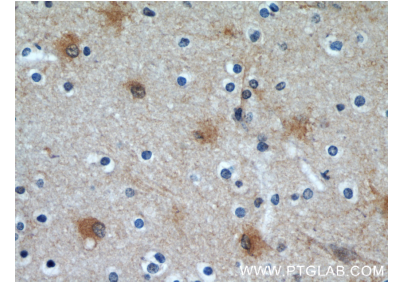
Selected Validation Data



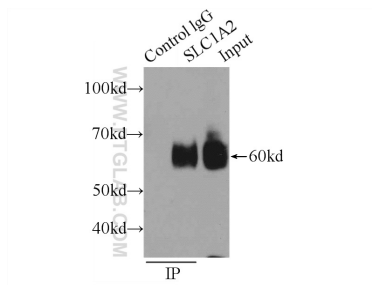
mouse brain tissue were subjected to SDS PAGE followed by western blot with 22515-1-AP (EAAT2 antibody) at dilution of 1:1000 incubated at room temperature for 1.5 hours.



Immunohistochemical analysis of paraffin-embedded human brain using 22515-1-AP (EAAT2 antibody) at dilution of 1:50 (under 10x lens).



Immunohistochemical analysis of paraffin-embedded human brain using 22515-1-AP (EAAT2 antibody) at dilution of 1:50 (under 40x lens).



IP Result of anti-EAAT2 (IP:22515-1-AP, 3ug; Detection:22515-1-AP 1:1000) with mouse brain tissue lysate 6000ug.