

For Research Use Only

BCR Polyclonal ANTIBODY

Catalog Number: 22585-1-AP



Basic Information

Catalog Number:

22585-1-AP

Size:

150UL, Concentration: 453 µg/ml by Bradford method using BSA as the standard;

Source:

Rabbit

Isotype:

IgG

Immunogen Catalog Number:

AG18281

GenBank Accession Number:

BC066122

GeneID (NCBI):

613

Full Name:

breakpoint cluster region

Calculated MW:

143 kDa

Observed MW:

150-160 kDa

Purification Method:

Antigen Affinity purified

Recommended Dilutions:

WB 1:500-1:2000

IP 0.5-4.0 µg for IP and 1:500-1:2000 for WB

IHC 1:20-1:200

IF 1:50-1:500

Applications

Tested Applications:

FC, IF, IHC, IP, WB, ELISA

Species Specificity:

human, monkey

Note-IHC: suggested antigen retrieval with TE buffer pH 9.0; (*) Alternatively, antigen retrieval may be performed with citrate buffer pH 6.0

Positive Controls:

WB: Y79 cells, COS-7 cells, HEK-293 cells, HeLa cells, K-562 cells, MCF-7 cells

IP: HEK-293 cells,

IHC: human skin tissue,

IF: HeLa cells, HepG2 cells

Background Information

The Bcr gene, mapping on chromosome 22, was originally identified by its presence in the chimeric Bcr-Abl oncogene. The Bcr gene encodes for the break point cluster region protein (Bcr). Although the BCR-ABL fusion protein has been extensively studied, the function of the normal BCR gene product is not clear. The protein has serine/threonine kinase activity and is a GTPase-activating protein for RAC1 and CDC42. A chromosomal aberration involving BCR has been found in patients with chronic myeloid leukemia.

Storage

Storage:

Store at -20°C. Stable for one year after shipment.

Storage Buffer:

PBS with 0.02% sodium azide and 50% glycerol pH 7.3.

Aliquoting is unnecessary for -20°C storage

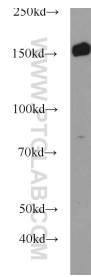
For technical support and original validation data for this product please contact:

T: 1 (888) 4PTGLAB (1-888-478-4522) (toll free in USA), or 1(312) 455-8498 (outside USA)

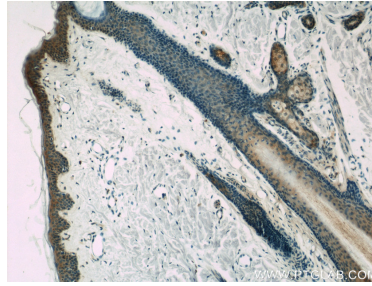
E: proteintech@ptglab.com
W: ptglab.com

This product is exclusively available under Proteintech Group brand and is not available to purchase from any other manufacturer.

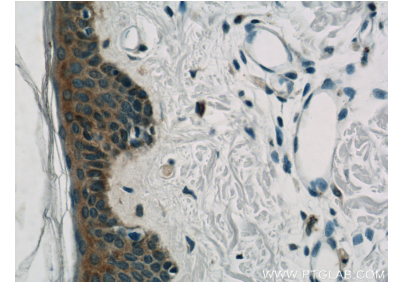
Selected Validation Data



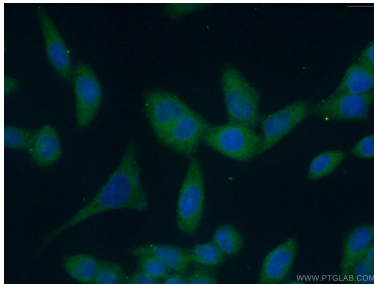
Y79 cells were subjected to SDS PAGE followed by western blot with 22585-1-AP (BCR antibody) at dilution of 1:1000 incubated at room temperature for 1.5 hours.



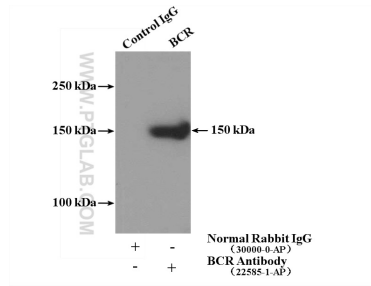
Immunohistochemical analysis of paraffin-embedded human skin slide using 22585-1-AP (BCR Antibody) at dilution of 1:50.



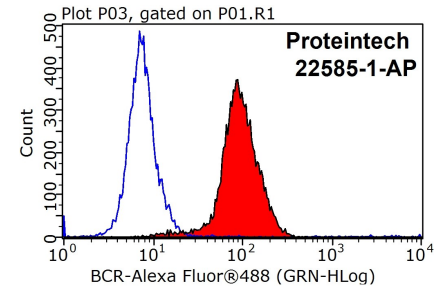
Immunohistochemical analysis of paraffin-embedded human skin slide using 22585-1-AP (BCR Antibody) at dilution of 1:50.



Immunofluorescent analysis of (-20 Ethanol) fixed HeLa cells using 22585-1-AP (BCR antibody) at dilution of 1:50 and Alexa Fluor 488-conjugated AffiniPure Goat Anti-Rabbit IgG(H+L).



IP Result of anti-BCR (IP:22585-1-AP, 4ug; Detection:22585-1-AP 1:1000) with HEK-293 cells lysate 3000ug.



1X10⁶ HepG2 cells were stained with .2ug BCR antibody (22585-1-AP, red) and control antibody (blue). Fixed with 90% MeOH blocked with 3% BSA (30 min). Alexa Fluor 488-conjugated AffiniPure Goat Anti-Rabbit IgG(H+L) with dilution 1:1000.