

For Research Use Only

PRICKLE1 Polyclonal ANTIBODY



Catalog Number: 22589-1-AP

1 Publications

Basic Information

Catalog Number:
22589-1-AP

Size:
86 µg/150 µl

Source:
Rabbit

Isotype:
IgG

Purification Method:
Antigen Affinity purified

Immunogen Catalog Number:
AG18407

GenBank Accession Number:
BC114939

GeneID (NCBI):
144165

Full Name:
prickle homolog 1 (Drosophila)

Calculated MW:
831aa, 94 kDa

Observed MW:
94 kDa, 55-60 kDa

Recommended Dilutions:

WB 1:500-1:2000

IP 0.5-4.0 µg for IP and 1:500-1:2000 for WB

Applications

Tested Applications:

IP, WB, ELISA

Cited Applications:

WB

Species Specificity:

human, mouse

Cited Species:

chicken

Note: suggested antigen retrieval with *TE* buffer pH 9.0; (*) Alternatively, antigen retrieval may be performed with *citrate* buffer pH 6.0

Positive Controls:

WB : mouse brain tissue; Neuro-2a cells

IP : mouse brain tissue;

Background Information

Notable Publications

Author	Pubmed ID	Journal	Application
Jianqiong Lin	30111656	Development	WB

Storage

Storage:

Store at -20°C. Stable for one year after shipment.

Storage Buffer:

PBS with 0.02% sodium azide and 50% glycerol pH 7.3.

Aliquoting is unnecessary for -20°C storage

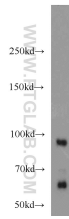
For technical support and original validation data for this product please contact:

T: 1 (888) 4PTGLAB (1-888-478-4522) (toll free in USA), or 1(312) 455-8498 (outside USA)

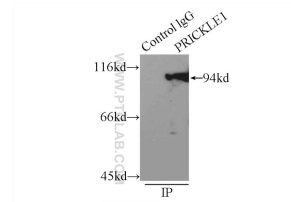
E: proteintech@ptglab.com
W: ptglab.com

This product is exclusively available under Proteintech Group brand and is not available to purchase from any other manufacturer.

Selected Validation Data



mouse brain tissue were subjected to SDS PAGE followed by western blot with 22589-1-AP (PRICKLE1 antibody) at dilution of 1:1000 incubated at room temperature for 1.5 hours



IP Result of anti-PRICKLE1 (IP:22589-1-AP, 3ug; Detection:22589-1-AP 1:1000) with mouse brain tissue lysate 7000ug.